



HORNBY ST MARGARET'S CE PRIMARY SCHOOL

HEALTH & SAFETY POLICY

Approved by ¹	
Name:	K Stafford-Roberts & T Somers
Position:	Headteacher & Fabric Health & Safety Committee Chair
Signed:	
Date:	6.11.17
Proposed review date ² :	September 2018

¹ The Employer free to determine how to implement.

² The Governing Body or Proprietor free to determine review period.

REVIEW SHEET

The information in the table below details earlier versions of this document with a brief description of each review and how to distinguish amendments made since the previous version date (if any).

[illegible]

Contents

PART 1 – Our Health & Safety Policy Statement and Organisation	1
PART 2 - Organisation / Responsibilities	3
2.1 The Governing Body	3
2.2 Head teacher	3
2.3 Health and Safety Coordinator	4
2.4 Teaching/Non-Teaching Staff Holding Positions of Special Responsibility	4
2.5 Special Obligations of Class Teachers	5
2.6 School Health and Safety Representatives	5
2.7 Obligations of All Employees	5
2.8 Pupils	6
2.9 Contractors, Visitors and Other Users of the Premises	6
2.10 Competent Health and Safety Assistance	6
2.11 Persons with Specific Responsibilities	7
2.12 Location of Supporting Systems/Documents	8
2.13 Other Related Policies	8
3. PART 3 – Arrangements / Procedures	9
3.1 Consultation, Communication and Competence	9
3.2 Monitoring, Review and Audit	10
3.3 Health and Safety Inspections of Premises and Activities	11
3.4 External Health and Safety Management Audits	12
3.5 Risk Management and Risk Assessments	12
3.6 Accidents, Incidents, Ill Health and Dangerous Occurrences	13
3.7 Liability Claims	15
3.8 First Aid	15
3.9 Disease/Infection Control	18
3.10 Document Management / Retention of Documents	20
3.11 Control of Hazardous & Dangerous Substances (COSHH & DSEAR)	20
3.12 Asbestos Management	21
3.13 Water Hygiene Management	21
3.14 Radon	22
3.15 Equipment and Maintenance	22
3.16 Workstations / Display Screen Equipment	23
3.17 Information Technology (IT) and Online Safety	23
3.18 Policy on the Use of Mobile Phones	23
3.19 Child Protection	24
3.20 Use of Pupils Images	24
3.21 Manual Handling	24
3.22 Working at Heights	26
3.23 Fire and Emergency Arrangements	27
3.24 Use and Control of Contractors and Consultants	29
3.25 Construction Work (CDM)	31
3.26 Site / Building Security and Personal Safety / Lone Working	32
3.27 Workplace Environments	36

3.28	Educational Visits and Activities	39
3.29	Food Safety Arrangements	39
3.30	School Cleaning	40
3.31	Electrical Safety	41
3.32	Gas Installation and Appliances.....	42
3.33	Smokefree Workplace	42
3.34	Transport	43
3.35	On-Site Vehicle/Pedestrian Separation	43
3.36	Personal Protective Equipment	44
3.37	Physical Education	44
3.38	Safe Use of Playground Equipment	45
3.39	Supervision of Pupils	46
3.40	Stage and School Performances/Events.....	48
3.41	Animals in School.....	48
3.42	Sun Protection	48
3.43	Pond	50
3.44	Trees	50
3.45	Behaviour	51
	Employee Declaration	52

Hornby St Margaret's

PART 1 – Our Health & Safety Policy Statement and Organisation

We recognise and accept our legal and moral duties to provide for the health, safety and wellbeing of our employees, pupils and any other person who may be affected by our activities both at school and during off-site visits.

As the employer, the Governing Body retains overall responsibility for ensuring that suitable health and safety management systems are in place and for establishing suitable systems within school at a strategic level.

The Governing Body appoints Kym Allan Health & Safety Consultants Ltd. (KAHSC) as the 'Competent person' to provide support, advice and guidance to the school on health, safety and welfare issues for both health and safety in school and for educational visits approval and notification. The school will access their expertise and guidance as required in the first instance.

Our health and safety performance contributes to the school's overall performance by helping to reduce injury, ill health, losses and liability, and we view our health and safety responsibilities as equally important to everything else we do. We are committed to continuous improvement in our health and safety performance and will ensure that sufficient resources are made available to achieve this.

We will ensure, so far as is reasonably practicable, that we provide safe premises and working environments, safe equipment and substances, safe activities and systems of work. We will provide suitable information, instruction, training and supervision to ensure we achieve and maintain excellent levels of health and safety. Legal compliance in all areas is deemed to be the minimum standard to be attained. We will establish suitable arrangements to deal with emergencies and school security.

Suitable and sufficient risk assessments will be used as a tool throughout our activities to ensure that our health and safety arrangements are adequate.

Everybody is expected to play their part and we recognise that, for health and safety management to be successful, all parties must be actively involved.

People are our key resource, not only our employees, but also the Governing Body, parents/carers, pupils, volunteers, contractors and any partner organisations we work with. To help ensure the active involvement of all parties, effective communication and consultation arrangements will be established through regular governor and staff meetings, communication with school unions, and through other arrangements including induction, health and safety noticeboards, and contractor control procedures. We will employ other methods to communicate our policy and arrangements as we deem appropriate.

The day-to-day responsibility for all school health, safety and welfare organisation and activity rests with the Head teacher.

The School is represented by a trained Health and Safety Coordinator nominated by the Head teacher and empowered to act on their behalf. The Head teacher will ensure that the Governing Body and KAHSC are kept informed of accidents and any other relevant health and safety issues, and that competent health and safety advice is sought where required. The Head teacher will appoint others to specific roles and will delegate tasks which help to support the school's health and safety arrangements. Our specific organisation is outlined in Part 2 of this Policy which includes details of persons undertaking specific health and safety roles.

The School will prepare a Health and Safety Action Plan for monitoring improvement, which will be used as a working document, kept under regular review, and will prepare further written documentation to support this policy which will describe the specific arrangements made for health and safety. These specific arrangements can be made available on request. Wherever possible we will benchmark our performance against available data and seek to achieve continual improvement in performance. Health and safety performance will be documented as part of the school's Annual Health & Safety Management Review.

The Governing Body will establish suitable forums and procedures for discussing and sharing relevant health and safety information with staff and others, and for implementing the health and safety procedures applicable to the school.

Staff throughout the school have responsibility not only for their own health and safety but also for that of any pupils or others under their control. All employees are expected to cooperate and to contribute towards meeting excellent health and safety performance in all school activities.

Whilst adopting excellent health and safety standards is viewed positively and contributes to the overall performance of the school, failure to adopt adequate procedures will be taken very seriously. Where required appropriate disciplinary procedures will be implemented.

In order to ensure we are achieving adequate health and safety standards, arrangements will be put into place to monitor and review our own performance. These will include regular audits conducted by KAHSC Ltd., periodic monitoring of our health and safety arrangements by the Governing Body and nominated staff, regular inspection of our equipment and premises, and the monitoring of accident and work-related ill health data. Levels of work-related accidents and ill health are deemed to be an indicator of management control and not necessarily the fault of individuals.

Wherever possible we will benchmark our performance against available data. Health and safety performance will

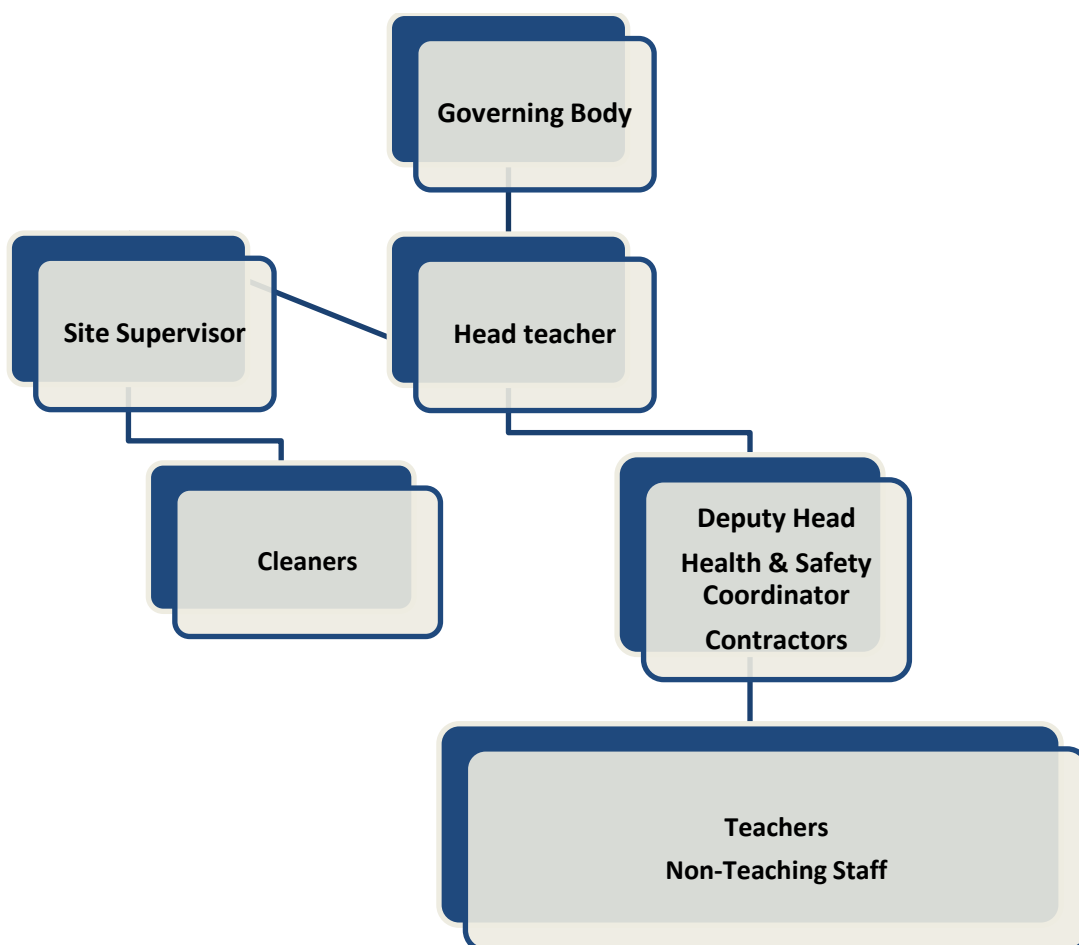
be provided in an Annual Health and Safety Report, prepared by the Head teacher or nominated person, to the Governing Body with interim updates provided where deemed appropriate.

This statement of policy on health and safety at work is made in accordance with section 2(3) of the Health and Safety at

Work Etc. Act 1974 and represents a summary of the school's organisation and arrangements. This statement and the school's documented arrangements will be made freely available to all staff and other interested parties on request.

This policy statement and relevant arrangements will be reviewed at least biennially to ensure they remain effective and up to date.

Health and Safety Organisation



Chair of Governors: Name: Lyndsey Winston

Signature: **Date:** 6.11.17

Head teacher: Name K Stafford-Roberts

Signature: **Date:** 6.11.17

Date for review: Annual Sept 2018

PART 2 - Organisation / Responsibilities

2.1 The Governing Body

The Governors must visibly demonstrate a commitment to achieving a high standard of health and safety performance within the School and the development of a positive attitude to health and safety among staff and pupils. They are responsible for ensuring a Health and Safety Management System is in place which ensures:

1. a clear written policy statement is in place that states the organisation and arrangements for implementing the school Policy;
2. that they promote and monitor the execution and effectiveness of this Policy, within the resources made available to them;
3. that a review of the school's Health and Safety Policy takes place at least biennially (or more often if the need arises) and a review of performance takes place annually with action taken on the findings if necessary;
4. that the Head teacher is aware of and implements this Policy and that they are aware of their duties and responsibilities under the Health and Safety at Work etc. Act 1974 and its subordinate legislation;
5. that specific duties and functions for health, safety and welfare are allocated to individuals who should receive specific, relevant information and training in order to ensure competence;
6. that all staff are given the opportunity to receive training on health and safety matters and have sufficient experience, knowledge and training to perform the tasks required of them;
7. that all premises, plant and equipment are safe and properly maintained;
8. the involvement of everyone in making the Policy work;
9. that they specify who is responsible, and the arrangements for identifying hazards, undertaking risk assessments and implementing appropriate control measures;
10. that where resources are required in order to implement specific control measures, priority is given to those hazards presenting the highest risk;
11. that everyone has sufficient information about the risks they run and the preventative measures they should take to minimise the risks;
12. that health and safety performance is measured by the use of inspections, checks and the recording of accidents;
13. that proper documented health and safety objectives are established at each relevant function and level within the establishment and that such objectives are quantified wherever practicable;
14. that they consult their appointed competent Health and Safety Adviser in resolving any health, safety or welfare problems;
15. that they consult with properly appointed Union and non-Union staff representatives on issues relating to their members' health, safety and welfare and communicate with such staff representatives the outcome of any safety audits, inspections and risk assessments which may affect the working conditions and/or practices of staff within the school;
16. that they receive and act appropriately upon reports from the Head teacher, Children's Services and any other internal or external agencies.

2.2 Head teacher

The day-to-day responsibility for all school health, safety and welfare organisation and activity rests with the Head teacher, who will:

1. assist the Governing Body with the production of an internal Policy document stating the organisational and other arrangements for implementing this Policy;
2. ensure that all members of staff have sufficient information, instruction and training to enable them to effectively carry out their duties and responsibilities as required by this Policy and legislation;
3. ensure that newly appointed staff, temporary staff and young workers receive sufficient information, instruction and training to enable them to effectively carry out their duties and responsibilities as required by this Policy, and the provisions of legislation;
4. be the focal point for reference on health, safety and welfare matters and give advice or indicate sources of advice. Any health and safety problems for which they are unable to provide a solution should be referred in the first instance to the Governing Body and/or KAHSC;
5. co-ordinate the implementation of the Governor's health, safety and welfare procedures in the school;
6. make clear any duties in respect of health and safety that are delegated to members of staff;
7. stop any practices or the use of any plant, tools, equipment, machinery, etc. considered to be unsafe, until satisfied as to their safety;
8. put in place procedures to monitor the health and safety performance of the school;

9. arrange for risk assessments of the premises and working practices to be undertaken, recorded and reviewed on a regular basis, and ensure they are kept informed of accidents and hazardous situations;
10. put into place and actively monitor risk assessments and resulting procedures relating to the identification and management of work-related ill-health with specific emphasis on the identification and reduction of work-related stress;
11. to receive and respond positively to health and safety problems reported to them by their staff and to generate co-operation from all employees under their direction;
12. ensure that all accidents are reported, investigated and any remedial actions required are taken or requested;
13. ensure that procedures and appropriate contacts with external services are established and are in place for all individuals to follow in the case of situations presenting serious and imminent danger;
14. review from time to time the emergency procedures, the provision of first aid and risk assessments;
15. review regularly, the dissemination of health and safety information in the school paying particular attention to newly appointed and temporary staff, volunteer helpers, students and other users of the premises;
16. ensure that all equipment used in the school is adequately maintained and inspected in accordance with the law and procedures contained in KAHSC Safety Series;
17. report to the Governing Body at least annually on the health and safety performance of the school;
18. co-operate with and provide the necessary facilities for properly appointed Trade Union Safety Representatives;
19. consult as appropriate, with staff on issues relating to their health, safety and welfare, and communicate the outcome of any safety audits, inspections and risk assessments which may affect the working conditions and/or practices of those staff;
20. ensure that contractors on the site are made aware of this Policy and the school's internal Policy and that health and safety matters are formally discussed at any pre-contract site meetings;
21. ensure, as far as is reasonably practicable, that the health, safety and welfare of pupils/students, visitors and members of the public are safeguarded.

2.3 Health and Safety Coordinator

The School Health and Safety Co-ordinator has been trained in health and safety in order to ensure competence and has the following duties:

1. to co-ordinate and manage the risk assessment process for the school and to ensure that where control measures are required, requests for funding are fed into the Management System;
2. to identify and manage via the risk assessment process, a whole school approach to work related ill-health, with a particular focus on stress related absence;
3. to ensure general workplace monitoring inspections are carried out;
4. to make provision for the inspection and maintenance of work equipment throughout the school and ensure adequate records are kept;
5. to advise the Head teacher on situations or activities which are potentially hazardous to the health, safety and welfare of staff, pupils and visitors;
6. to maintain continuing observations throughout the school and make relevant comment to the Head teacher, the Head of a Department or a member of staff, as appropriate, if any unsatisfactory situation is observed;
7. to ensure that staff are adequately instructed in health, safety and welfare matters in connection with their specific work place and the school generally;
8. to ensure that adequate records are kept of specific health, safety and induction training;
9. to ensure that health and safety advice and information received by the school are disseminated in such a way that all appropriate staff have access to such information;
10. undertaking any other functions devolved to them by the Governing Body.

Co-ordinators are given the required non-contact time in order that they may carry out their duties accordingly.

2.4 Teaching/Non-Teaching Staff Holding Positions of Special Responsibility

These staff may include Deputy/Assistant Head teacher(s), Heads of Department/Curriculum Co-ordinators, Clerical Managers/Supervisors and Site Managers/Janitors who will:

1. have a general responsibility for the application of the school's Health and Safety Policy to their own department or area of work and are directly responsible to the Head teacher for the application of the health, safety and welfare procedures and arrangements;
2. establish and maintain safe working procedures including arrangements for ensuring, so far as is reasonably practicable, the absence of risks to health and safety in connection with the use, handling, storage and transport of articles and substances;

3. resolve health, safety and welfare problems members of staff may refer to them, or refer to the Head teacher or Health and Safety Coordinator any problems for which they cannot achieve a satisfactory solution within the resources available to them;
4. carry out regular health and safety risk assessments of the activities for which they are responsible, ensuring that staff involved in such activities are made fully aware of the relevant control measures, and submit reports to the Head teacher or the Health and Safety Co-ordinator;
5. in accordance with the school policy carry out risk assessments and monitor outcomes in relation to individual cases of work related ill-health as and when these are brought to the manager's attention or are identified in individual members of staff;
6. carry out regular inspections of their areas of responsibility to ensure that equipment, furniture and activities are safe and record these inspections where required;
7. ensure that all staff under their control are familiar with national and local guidance and the KAHSC Safety Series, if issued, for their area of work;
8. ensure, so far as is reasonably practicable, the provision of sufficient information, instruction, training and supervision to enable other employees and pupils to avoid hazards and contribute positively to their own health and safety;
9. where appropriate, ensure relevant advice and guidance on health and safety matters is sought either from National Bodies of particular subjects, KAHSC, or others;
10. investigate any accidents that occur within their sphere of responsibility, ensuring that the appropriate recording and reporting procedures are followed;
11. prepare an annual report for the Head teacher on the health and safety performance of their department or area of responsibility.

2.5 Special Obligations of Class Teachers

The health and safety of pupils in classrooms, laboratories, workshops and physical education areas is the responsibility of class teachers. Class teachers are expected to:

1. exercise effective supervision of the pupils and to know the emergency procedures in respect of fire, first aid and other emergencies, and to carry them out;
2. follow the particular health and safety measures to be adopted in their own teaching areas as laid down in the relevant National Guidelines or the KAHSC Safety Series and website guidance, if issued, and to ensure that they are applied;
3. give clear oral and written instructions and warnings to pupils as often as necessary;
4. follow safe working procedures personally;
5. require the use of protective clothing and guards where necessary;
6. make recommendations to their Head teacher or Health and Safety Coordinator on health and safety equipment and on additions or necessary improvements to plant, tools, equipment or machinery;
7. integrate all relevant aspects of safety into the teaching process and, if necessary, give special lessons on health and safety;
8. avoid introducing personal items of equipment (electrical or mechanical) into the school without prior authorisation;
9. report all accidents, defects and dangerous occurrences to their Head teacher or line manager;
10. report any situations which are causing or are likely to cause work related ill-health and work with Senior Managers to bring about a successful resolution to issues raised.

2.6 School Health and Safety Representatives

The Governing Body and Head teacher recognise the role of Health and Safety Representatives appointed by a recognised trade union or staff. Health and Safety Representatives will be allowed reasonable opportunities to investigate accidents and potential hazards, pursue employee complaints and carry out school inspections within directed time. They are also entitled to certain information, for example, about accidents, and to paid time off to train for and carry out their health and safety functions. They are not part of the management structure (unless officially invited to be so) and are not carrying out the duties on behalf of the Head teacher or Governing Body.

2.7 Obligations of All Employees

Notwithstanding any specific duties that may have been delegated to them, all employees must:

1. make themselves familiar with the contents of this Policy;
2. keep up-to-date with all current safety requirements and/or safety advice that affect their particular area of work, and seek competent advice if required;
3. comply with any control measures put in place as a result of Risk Assessments carried out;

4. act in the course of their employment with due care for the health, safety and welfare of themselves and others;
5. observe all instructions on health and safety issued by School or any other person delegated to be responsible for a relevant aspect of health and safety;
6. take heed of any instruction and/or training received on the use of equipment, machinery, dangerous substance or safety device;
7. use and maintain correctly, in accordance with any instruction and/or training received, all personal protective equipment issued;
8. report every accident, injury and, where appropriate, near miss using the agreed procedures and the appropriate documentation;
9. co-operate with other persons to enable them to carry out their health and safety responsibilities and/or statutory duties;
10. inform their Line Manager of any shortcomings they consider to be in the school's health and safety arrangements;
11. exercise good standards of housekeeping and cleanliness;
12. know and apply the procedures in respect of fire, first aid and other emergencies;
13. co-operate with the appointed Trade Union Health and Safety Representative and the Enforcement Officers of the Health and Safety Executive.

Failure to exercise reasonable care for the safety of oneself, fellow employees or members of the public; to co-operate with the Governors on health and safety matters; or the misuse of safety equipment provided may justify disciplinary action being taken against the employee concerned.

2.8 Pupils

Pupils, in accordance with their age and aptitude, are expected to:

1. exercise personal responsibility for the health and safety of themselves and others;
2. observe standards of dress consistent with safety and/or hygiene;
3. observe all the health and safety rules of the school and in particular the instructions of staff given in an emergency;
4. use and not wilfully misuse, neglect or interfere with things provided for his/her health and safety.

2.9 Contractors, Visitors and Other Users of the Premises

Contractors, visitors and other users of the premises are required to observe the health, safety and welfare rules of the school. In particular, parents and other volunteers helping out in school, including those associated in self-help schemes are made aware of the health and safety policy applicable to them by the teacher to whom they are assigned.

Where the school buildings are let/hired out to other users, those users should be informed of, and familiarise themselves with, emergency evacuation and accident reporting procedures. These form part of the school Lettings Arrangements/Conditions of Hire.

2.10 Competent Health and Safety Assistance

Without detracting from the primary responsibility of the governors and staff for ensuring safe conditions of work, and in compliance with the Management of Health and Safety at Work Regulations 1999, the School will secure, competent assistance in applying the provisions of health and safety law where it is necessary to assist management in that task. **Kym Allan Health and Safety Consultants Ltd. (KAHSC)** have been appointed to provide such competent assistance (www.kymallanhsc.co.uk):

Kym Allan Health & Safety Consultants Ltd. 3-4 Citadel Row Carlisle Cumbria CA3 8SQ			
		Tel. (Office hours & 24 hour emergencies):	01228 210152
		Fax:	01228 210153
Name	Title	Mobile	Email
Kym Allan	Director	07909 484449	kym@kymallanhsc.co.uk
Helen Blamire	Safeguarding, Health & Safety Consultant	07949 604266	helen.blamire@kymallanhsc.co.uk
Penny Gosling	Safeguarding, Health & Safety Consultant	07717 887543	penny.gosling@kymallanhsc.co.uk

Name	Title	Mobile	Email
Barbara Ross	Health & Safety (Property) Consultant	07710 982606	barbara.ross@kymallanhsc.co.uk
Julie Smithson	Safeguarding, Health & Safety Administrator		julie.smithson@kymallanhsc.co.uk
Laura Sim	Business Support Administrator		laura.sim@kymallanhsc.co.uk
Gordon Hastings	Health & Safety Consultant		gordon.hastings@kymallanhsc.co.uk

Further Assistance and guidance can be sought from:

Cumbria & Lancashire Public Health England (PHE) 1st Floor York House, Ackhurst Business Park Foxhole Road Chorley PR7 1NY Tel: 0344 225 0562 – Press 2 for Cumbria	Health & Safety (Executive HSE) Redgrave Court Merton Road Bootle Merseyside L20 7HS Incident Contact Centre Tel: 0845 300 9923 Infoline: 0845 345 0055 Website: www.hse.gov.uk
Lancashire Safeguarding Children Board: General Enquiries: (0)1772 530283 / (0)1772 530329 Email: lsqb@cyp.lancsccc.gov.uk Website: http://www.lancshiresafeguarding.org.uk/ Concerns about a child should be reported on Tel: 0300 123 6720 or out of hours 0300 123 6722 (8pm - 8am) . LADO: Tim Booth, Tel: 01772 536694 School Safeguarding Officer: Andrea Glynn, Tel: 01772 531196	Environment Agency Incident Hotline: 0800 807060 Floodline: 0345 988 1188

2.11 Persons with Specific Responsibilities

The Governing Body and Head teacher have delegated certain tasks and roles to the following:

- The Health and Safety Co-ordinator – **K Stafford-Roberts**
- The Health and Safety Governor(s) – **T Somers**
- Workplace First Aiders – **K Stafford-Roberts**
- Paediatric First Aiders – **See workplace notices**
- Other First Aiders (if any) - **See workplace notices**
- Person responsible for ensuring first aid boxes remain stocked – **J Allen**
- Site Security issues, CCTV etc. - **Headteacher**
- Defects are to be reported to – **Headteacher**
- Organisation for equipment repairs, maintenance and routine servicing - **Property group**
- Training and Development Coordinator (H&S) - **Headteacher**
- Asbestos Coordinator, responsible for visual inspection and the recording of termly condition monitoring - **Headteacher**
- Coordinator of Risk and COSHH Assessments is - **Headteacher**
- The person responsible for ensuring that all persons working in school undergo suitable recruitment and vetting checks - **Headteacher**
- Educational Visits Co-ordinator - **Headteacher**
- The Responsible Person for Fire Safety - **Headteacher**
- The Fire Safety Manager (person in charge in an emergency) - **Headteacher** and deputy – **C Sharpe**
- Fire Wardens - **Class teachers**
- Person responsible for testing/checking the fire alarm/emergency lighting/fire extinguishers etc. and maintaining the Fire Log Book – **Headteacher / Site Supervisor**
- Holder of accident/incident records, pupil accident book and official site accident book – **C Sharpe**
- The person(s) responsible for undertaking accident investigations - **Headteacher**
- Ladder register is maintained by – **Site Supervisor**

- PE and fixed playground equipment visual inspection - **Site Supervisor**
- PE and fixed playground equipment inspection and maintenance – **Lancs CC- R Wood**
- Radiation Protection Supervisor - **Headteacher**

2.12 Location of Supporting Systems/Documents

In order to effectively implement our health and safety arrangements, we refer to a variety of supporting internal and external documents and procedures. This section outlines where you can access key documents and information in school.

Location of Key Documentation

- Displayed H&S Policy Statement and Arrangements – **Staffroom**
- General School Risk Assessments – **Staff handbook**
- Emergency/Fire/Critical Incident & Recovery Plans – **Emergency bag** (Copies also held off site)
- Health and Safety Management Plan - **Emergency bag**
- Asbestos Management Plan (including Asbestos Register) - **Contractor signing in**
- Water Hygiene Risk Assessment – **Water logbook**
- Defect reporting system/book – **staff handbook**
- Maintenance and servicing records (Building Register) – **Main office**
- Pupils' Accident Book – **next to 1st aid box**
- Official Accident Book is held in - **next to 1st aid box**
- A list of pupils with specific medical conditions/needs is held in – **main office**
- Archived health and safety documents/records are held in - **main office**

2.13 Other Related Policies

This policy should be read in conjunction with other related school policies and procedures including:

- Child Protection Policy and procedures
- Procedures for Protecting Children when Contractors are Working in Educational Settings
- Recruitment Selection and Pre-Employment Vetting Policy & procedures including the Single Central Record
- E Safety Policy and procedures
- Whole School Behaviour Policy and procedures
- Staff Code of Conduct
- Sex Education Policy
- Single Equality Scheme/Objectives
- Guidance on the Use of Photographic Images
- School Drug Policy
- Supporting Pupils with Medical Conditions Policy and procedures
- Educational Visits Procedures
- Attendance Arrangements
- Data Protection Policy
- Special Educational Needs Information Report/Policy
- Missing Child Procedures
- Emergency Plan(s)
- Risk Assessments
- Premises Management including security measures, formal inspections and Buildings Register
- Accessibility Plan
- Voluntary Home School Agreement
- Lettings Arrangements

PART 3 – Arrangements / Procedures

3.1 Consultation, Communication and Competence

Consultation

The School recognises the contribution which employees and pupils are able to make towards health and safety in their workplace and will co-operate and consult with employees and pupils as necessary. If a decision involving work equipment, processes or organisation could affect the health and safety of our staff, we will allow time to give them, or their representatives, the chance to express their views, and take account of these views before reaching a decision. Consultation with staff will be carried out on all matters relating to health and safety at work either collectively or direct with individuals.

The Governing Body will recognise, co-operate and consult with properly appointed Health and Safety Representatives to enable them to fulfil their statutory functions and ensure that effective arrangements are in place for consultation and communication with staff within school. Provision will be made for specific staff safety committees where requested and they will be provided with the facilities and assistance they may reasonably require to carry out their functions.

The school has a dedicated Health and Safety Committee consisting of Senior Management, representatives from each department, Site Manager, Health and Safety Coordinator, Union Safety Representative etc. This aims to improve communication links throughout the school and give ownership of health and safety to staff at different levels. Members of the Committee report back directly to their own teams/departments and bring to the Committee issues raised by their teams/departments in a bid to improve health and safety throughout the school.

The relevant Governor sub-committee meets regularly to discuss health, safety and welfare and safeguarding issues affecting staff, pupils or visitors. Action points from meetings are brought forward for review by school management.

Communication

The School will provide all employees (including trainees and those on fixed term contracts) with comprehensible and relevant information on the risks to their health and safety identified by risk assessments and the preventive and protective measures required to prevent accident, injury or loss.

Agency workers and seconded workers are treated as employees under health and safety legislation and we will ensure that these employees have appropriate induction and are informed likewise of hazards and risks associated with the working environment.

Information supplied will be pitched appropriately, given the level of training, knowledge and experience of the employee. It will also be provided in a form which takes account of any language difficulties or disabilities. For employees with little or no understanding of English, or who cannot read English, we may need to make special arrangements. These could include providing translation, using interpreters, or replacing written notices with clearly understood symbols or diagrams.

While any child (below minimum school leaving age) or Young Person (under 18) is at work i.e. on work experience from another school, a trainee or employed, the requirements to provide information are the same as for other employees. There is however an extra requirement on the employer to provide the parents/carers of children at work with information on the key findings of the risk assessment and the control measures taken, before the child starts work. Children on work experience will also receive formal Health and Safety Induction.

Kym Allan Health and Safety Consultants Ltd. (KAHSC) provides competent health and safety advice to the School and is responsible for keeping the school up to date on all health and safety matters of relevance. The Health & Safety Coordinator is responsible for ensuring that all new information supplied by KAHSC is effectively communicated to the relevant target audience.

Information and/or advice on matters relating to the health, safety and welfare of employees will generally be circulated via staff meetings unless it is of immediate importance to any individual employee or group of employees. Health and safety will be a standing item on the agenda of staff meetings and Governor meetings.

Additions and alterations to the Policy, which is a working document, will be circulated to staff promptly.

Safety Signs & Notices

Where a risk assessment indicates that, having adopted all appropriate precautions, risks cannot be adequately controlled except by the provision of appropriate safety signs, then such signs will be provided. Appropriate signs will be displayed and will be easy to follow; a Health and Safety information notice board will be provided/maintained and a Health and Safety Law poster displayed.

Co-Ordination

Where the School shares premises with another organisation or employer, whether permanently or temporarily, arrangements and procedures shall be adopted to ensure that all concerned are able to comply with their statutory health and safety duties. The School will ensure that arrangements are made to co-ordinate the activities of its own employees and those of outside agencies working on school premises, such as contractors, cleaning/catering staff, maintenance personnel and private hirers.

Health and Safety Training

All personnel shall be competent to perform tasks that may impact on health and safety in the school. Competence shall be defined in terms of appropriate education, training and/or experience. Training procedures shall take into account differing levels of responsibility, ability and literacy; and risk.

All employees will be provided with:

- induction training in the requirements of this policy;
- update training in response to any significant change;
- training in specific skills needed for certain activities, (e.g. use of hazardous substances, work at height, use of certain machinery etc.)
- refresher training where required.

A formal health and safety training record will be set up and maintained that highlights all health and safety training that has been carried out. The training plan will highlight any statutory refresher training that may be required. This will be a working document and will show at a glance what health and safety training staff have actually undertaken, and when refresher training is required (where applicable).

Each individual's line manager will be responsible for assessing the effectiveness of training received.

Each member of staff is also responsible for drawing their line manager's attention to their own personal needs for training and for not undertaking duties unless they are confident that they have the necessary competence.

Induction Training

All new members of staff (including volunteers, students and pupils on work experience) are encouraged to familiarise themselves with the health and safety procedures in school. It is the responsibility of the Health & Safety Coordinator or line manager to ensure that the relevant procedures and documentation has been seen and understood. Further training and development is identified and incorporated within in the School Management/Development Plan.

The school has a Health and Safety Induction Checklist which will be completed with each new starter/trainee commencing the first week of their employment. Separate checklists are also available for pupils from other schools on Work Experience at our school along with school employed cleaning and catering staff.

References and Useful Links

Safety Representatives and Safety Committee Regulations 1977

Health and Safety (Consultation with Employees) Regulations 1996

Safety Signs and Signals Regulations 1996

Management of Health and Safety at Work Regulations 1999

KAHSC General Safety Series G12 <https://www.kymallanhsc.co.uk/Document/DownloadDocument/7862>

KAHSC General Safety Series G29 <https://www.kymallanhsc.co.uk/document/downloadaddocument/8240>

KAHSC General Safety Series G43 <https://www.kymallanhsc.co.uk/Document/DownloadDocument/8067>

3.2 Monitoring, Review and Audit

Governors will fulfil their obligation to monitor the effectiveness of the implementation of the Health Safety Policy by undertaking documented Governor Health and Safety Monitoring throughout each school year (packs available on the KAHSC website).

The Governing Body with the support of the Head teacher will, at intervals that it determines appropriate, monitor and review the school's health and safety management system to ensure its continuing suitability. Relevant staff and other parties will be involved as appropriate. Reviews of specific risk areas may also be undertaken. Reviews shall be documented where appropriate. The review process aims to identify where changes to policy, objectives and other elements of the health and safety management system are required.

Typical information used in such a review may include the following items:

- accident statistics/trends;
- results of internal and external health and safety management audits, updated legislative requirements and corrective actions implemented since the previous review;

- the findings from premises inspections or other monitoring exercises;
- reports of emergencies (actual or exercises);
- reports from individuals on the effectiveness of the system locally;
- reports of hazard identification, risk assessment and risk control processes.

Typical actions following such a review may include the following items:

- minuted discussions and detail of the review;
- revisions to the Health and Safety Policy and objectives;
- specific corrective or improvement actions with assigned responsibilities and target dates for completion and review;
- areas of emphasis to be reflected in the planning of future internal occupational health and safety management system.

Those undertaking such reviews will report as required following its completion.

Health and Safety Objectives / Management Plan

The Governing Body will establish and maintain documented health and safety objectives that will be SMART (*specific, measurable, achievable, realistic & time bound*) and be consistent with the Health and Safety Policy including commitment to continual improvement. There will be a suitable 'programme' in place i.e. set objectives will be documented within an Action/Management Plan. Objectives will be quantified wherever practicable with timescales and costs. Senior management (or other suitable persons) will be allocated responsibilities regarding health and safety objectives which will be communicated to relevant personnel. The Management Plan/Objectives will be set and/or reviewed following the Management Review (as above) or at other times when necessary.

References and Useful Links

OHSAS 18001 Occupational Health and Safety Management Systems

HSG 65 Successful Health and Safety Management

Compliance Monitoring in Council Buildings <https://www.kymallanhsc.co.uk/Document/DownloadDocument/7994>

KAHSC Model H&S Management Plan <https://www.kymallanhsc.co.uk/document/downloadaddocument/8722>

KAHSC Termly Governor Monitoring Packs:

Autumn - <https://www.kymallanhsc.co.uk/document/downloadaddocument/7307>

Spring - <https://www.kymallanhsc.co.uk/document/downloadaddocument/7308>

Summer - <https://www.kymallanhsc.co.uk/document/downloadaddocument/8570>

3.3 Health and Safety Inspections of Premises and Activities

The Governors (or Health and Safety Sub-committee) in liaison with the Head teacher and/or Health and Safety Coordinator will undertake a health and safety inspection of the school premises on at least an annual basis. The findings of these inspections will be recorded. Any corrective actions required following these inspections will be reported and discussed with the Head teacher. Where possible, action will be taken immediately, or if planned actions are required these will be added to our Health and Safety Management Plan. Any Health and Safety Union Representative for the school will be invited to attend these inspections.

Safety Inspection Regimes

More frequent safety inspections will be carried out by nominated staff to ensure:

- Cleanliness of all workplaces, good housekeeping, the removal of waste, suitable storage of materials, books and files, etc.;
- Welfare and sanitary provisions (male/female, children's and disabled toilet facilities) are in good order;
- Good condition of premises and equipment, including highlighting defects;
- Recording of specific inspections is taking place, e.g. asbestos monitoring, pre-use visual checks of electrical and work equipment, visual inspection of play/gym equipment, vehicle checks;
- Supervision of relevant activities is taking place on the school site;
- Suitability of on-site vehicle movements (traffic management plans).

The frequency of inspections will depend on the activity being undertaken and hazards present. Hazardous workplaces such as kitchens, D&T, Science etc. may need to be inspected at a greater frequency than low risk environments such as offices and records will generally be kept of inspections of higher risk environs.

Defect Identification and Reporting

We recognise that defective equipment or dangerous conditions can lead to personal injury or harm. No defective electrical appliance or lead, and no defective mechanical device or tool that might give rise to danger may be used.

All defects to equipment or furniture and minor defects to doors, floors, walls etc. are to be reported to a nominated person. Steps should be taken to isolate the equipment or work area in question, and to warn others of the hazard by

posting warning notices. That person will ensure that the necessary action is taken to rectify each defect without delay. Where funds are not immediately available, the defective the equipment or work area in question will be taken out of service and this will be added to the Annual Health and Safety Management for action when funds become available. This will also become an agenda item at the next relevant Governors Sub Committee Meeting.

All staff are required to report accidents, incidents, near misses, defects and hazards. If, following their report, they are not satisfied with the actions taken to address their concerns, they may raise the issue through their usual line management route. If the problem remains unresolved, then the issue may be referred to the Head teacher or Governing Body.

References and Useful Links

KAHSC Governor H&S Inspection Checklist <https://www.kymallanhsc.co.uk/document/downloadaddocument/7920>
KAHSC Defect Report Sheet <https://www.kymallanhsc.co.uk/document/downloadaddocument/7164>

3.4 External Health and Safety Management Audits

External audits are independent, unbiased reviews of the school's management system and can be a very useful exercise. KAHSC will, on request, carry out a health and safety management audit. These audits will be carried out by a qualified safety professional. Following this process we will be supplied with a detailed report containing requirements and recommendations to improve our existing arrangements. Any recommended actions arising from these audits will be addressed by the Head teacher and Governing Body with the support of KAHSC where required.

References and Useful Links

OHSAS 18001 Occupational Health and Safety Management Systems
HSG 65 Successful Health and Safety Management

3.5 Risk Management and Risk Assessments

The purpose of undertaking a risk assessment is to identify significant risks, to document what hazards exist and the measures necessary to control them. Risk assessment allows us to meet the principle requirement of the Management of Health and Safety at Work Regulations and to establish safe ways to work and to protect staff, pupils and workers and any others who may be affected by school activities.

Generic School Risk Assessments for many day to day site, admin and curricular activities along with off-site visits are available to download from the KAHSC website www.kymallanhsc.co.uk.

Where model/generic risk assessments are used, we ensure that these are tailored to reflect the actual activities in relation to the school.

Although the Head teacher remains responsible for ensuring development, all staff within school could be involved in the risk assessment process. When relevant, risk assessments will be developed and/or reviewed with the input of affected staff. Development will usually be led by an individual who has received specific training in the theory of risk assessment and a teacher/head of department/other who has the hands-on experience of tasks being assessed. Where significant risks are identified, appropriate measures and/or safe working practices are introduced to reduce/eliminate such hazards.

Risk assessments will be working documents, their effectiveness monitored and reviewed following any significant changes or when they are no longer valid e.g. following accidents or near misses, the introduction of new equipment or systems of working, legislative changes etc. Risk assessments do NOT need to be re-written each year, but DO need to be monitored and checked to ensure they remain valid, and revised if there have been any changes. Staff should ensure they are aware of any risk assessments relevant to their roles, and completed risk assessments will be available at all times for staff to view and will be held as working documents.

Specific risk assessments relating to individuals, e.g. staff member or young person/pupil are held on the individual's personal file and will be undertaken by the relevant line manager.

New and Expectant Mothers - Risk Assessment

It is the responsibility of staff to inform their line manager of any medical condition or pregnancy which may impact upon their work. When a member of staff notifies their line manager of their pregnancy, relevant risk assessments will be considered and an additional individual assessment carried out to ensure that throughout pregnancy, while at work and on return to work, risks to their health and safety are adequately controlled.

Young Persons at Work - Risk Assessment

We are happy to provide a limited number of work experience placements for young people. The exact nature of the duties undertaken by the student will depend on a number of factors, including the age and experience of the work experience student and the requirements of the course being undertaken by work experience student.

A designated member of staff will supervise all work experience students. They will oversee the visit and provide general guidance and advice on school routines, expected standards of behaviour, and duties etc.

The work experience student will become a member of the School staff for the period of their visit. This fact will have considerable bearing on their expected behaviour. A formal Health and Safety Induction will be carried out on day one of the placement.

The risks associated with work experience pupils or trainees may differ slightly to the risks that have been identified for other workers due to their inexperience, possible immaturity and the unfamiliarity with the environment or work processes. Existing risk assessments must take into account any young persons working at the school (both pupils on work experience from other schools under the compulsory school leaving age and young employees under the age of 18) who may be put at increased risk due to their age and inexperience. There is however an extra requirement on the employer to provide the parents/carers of children at work with information on the key findings of the risk assessment and the control measures taken, before the child starts work.

Initially the work experience will usually involve periods of observation. As the student becomes more familiar with the layout of the School and its operation the expectations of and responsibilities given to the student will change. Duties and responsibilities may include assisting with the supervision of morning duties, assisting staff before or during activity sessions and with cleaning up.

In order to satisfy fire regulations, if work placement students wish to leave the site during break time or lunch breaks, it will be necessary to inform a member of the staff before they leave.

If the School is required to produce a report or record of the experience, this will need to be discussed with a supervising staff member at the start of the visit.

References and Useful Links

CLEAPSS – www.cleapss.org.uk

Association for PE – www.afpe.org.uk

HSE Risk Assessment site - <http://www.hse.gov.uk/risk/risk-assessment.htm>

HSE Work Experience Guidance www.hse.gov.uk/youngpeople/workexperience/organiser.htm

KAHSC General Safety Series G09 <https://www.kymallanhsc.co.uk/Document/DownloadDocument/7790>

KAHSC General Safety Series G43 <https://www.kymallanhsc.co.uk/Document/DownloadDocument/8067>

KAHSC Work Experience Induction Checklist <https://www.kymallanhsc.co.uk/Document/DownloadDocument/8241>

School's current Risk Assessments

3.6 Accidents, Incidents, Ill Health and Dangerous Occurrences

Recording and Reporting

Accidents Involving Pupils: All incidents involving pupils will be recorded in the Pupil Accident Book/log sheets.

Where the following criteria is fulfilled, an entry will ALSO be made on the KAHSC on-line Accident Recording System:

- all serious injuries involving pupils;
- pupils removed from the scene and taken to hospital for treatment;
- serious head injuries i.e. where pupil is taken to hospital or medical advice is sought or advised;
- where fault can be assigned i.e. lack of supervision, faulty equipment etc.;
- any incidents of violence or aggression resulting in serious injury or where police involvements has been necessary;

The Reporting of Injuries, Diseases and Dangerous Occurrences Regulations (RIDDOR) place duties on employers to report serious incidents to the HSE. KAHSC will notify the HSE on your behalf of any incidents that are RIDDOR reportable. Data must therefore be entered on the KAHSC on-line Accident system within 7 days of the accident.

Parents will be informed about all injuries/accidents to children and of any first aid given. 'Bump Head letters' are sent home with pupils following any accident involving head injuries.

EYFS ONLY – Reporting to Ofsted and Local Child Protection Agencies: Refer to relevant section below for details.

Accidents Involving Employees: The Official Social Security Accident Book (BI 510) will be completed for all incidents/accidents involving employees. The entry in the accident book can be made either by the injured person or by a nominated person. After each entry is made, the page will be torn out, a copy given to the injured person and the original filed in a secure and confidential location in line with the Data Protection Act.

For all accidents/incidents involving employees, an entry will ALSO be made on the KAHSC on-line Accident Recording System by the Line Manager or nominated person.

Under RIDDOR, any accidents to staff which result in the following are reportable to the HSE. KAHSC will notify the HSE on our behalf:

- Fatality
- Specified Injuries
- Over seven-day absence
- Reportable occupational diseases

Although Over 3 Day Injuries/Absence are no longer reportable to the HSE, we must still keep a record of all over three day injuries - completion of the KAHSC on-line Accident Reporting system and the keeping of local records within on-site accident books will be sufficient.

Accidents Involving Contractors and the Self-Employed: The Official Social Security Accident Book must be completed just as it would be for school employees.

Accidents/incidents involving contractors working on school premises are normally reportable by their employers. It is important, however, that school staff are made aware of any accident, incident or ill-health in the event that the resulting injury/ill-health or incident was as a result of something which the school is responsible for e.g. electric shock as a result of faulty mains wiring; exposure to asbestos where the school staff failed to inform the contractors of its presence etc. Information provided to contractors regardless of whether they work in the school on a permanent or temporary basis will include the need to report accidents or incidents to the school representative.

If a self-employed contractor is working in school premises and they suffer a specified injury or an over-seven-day injury, the information should be entered on the KAHSC on-line Accident system for onward reporting to the HSE.

Accidents Involving Members of the Public (Other Than Pupils) Including Volunteers: The Official Social Security Accident Book must be completed and an entry will be made on the KAHSC on-line Accident Recording System.

Injuries to members of the public or volunteers where they are taken from the scene of an accident to hospital for treatment and the accident arose in connection with 'work activities' are reportable to the HSE under RIDDOR. In these instances, a telephone report must be made immediately to KAHSC (or as soon as possible if outside of normal office hours). KAHSC will notify the HSE on our behalf of any incidents that are RIDDOR reportable.

Violent Incidents: Employees are reminded that all incidents of aggression, threat or actual violence that takes place either at work or as a direct result of their work, must be reported to their Line Manager. The Governors take these matters very seriously and any evidence of problems will result in a review to seek better methods of elimination and control.

Violent incidents between pupils will be dealt with in accordance with the Whole School Behaviour Policy and do not need to be reported to KAHSC unless serious in nature i.e. severity of injury, police involvement etc. although we can record them using the KAHSC on-line Accident reporting system for statistical purposes and to analyse patterns or trends.

Violent incidents towards staff by other staff, pupils or members of the public will be dealt with in accordance with the Whole School Behaviour Policy. Physical or verbal violence to staff will be reported to KAHSC in the following situations:

- absence from work as a result of emotional, psychological or physical injury;
- any incident involving physical assault;
- involvement of the police or other agencies;
- incidents resulting in a review of the school's procedures;
- any other violent incident that an employee feels is unacceptable should be reported.

Near Misses: Staff and students are encouraged to report near misses as such incidents could, in the future, result in a major injury if appropriate control measures are not introduced to prevent a more serious incident occurring. The Near Miss Report Form (available on the KAHSC website) should be used for this purpose. There is no requirement to report these incidents to KAHSC as the analysis of near misses at a local level will help us to ensure that potential accidents are prevented in the future.

Dangerous Occurrences: An incident with the potential to cause injury to a person and/or damage to equipment, property and premises which must be reported to the HSE. This includes situations such as the accidental release of substances which may damage the health of any person (e.g. Asbestos) and electrical short circuits or overload causing fire or explosion. Details can be found in Appendix B in KAHSC General Safety Series G03. For any dangerous occurrences an entry will be made on the KAHSC on-line Accident Recording System within 7 days of the incident. KAHSC will notify the HSE on our behalf of these incidents.

Occupational Ill-Health and Notifiable Diseases: Where an employee considers the ill-health to be work related, or if this is confirmed by an Occupational Health Specialist or other professional medical practitioner, this must be reported without delay to KAHSC using the on-line Accident Recording System.

Where the work related ill health results in a Notifiable Occupational Disease (refer to Appendix B in KAHSC General Safety Series G03), these incidents will be reportable to the HSE by KAHSC.

Reporting To Ofsted and Local Child Protection Agencies

Our Early Years Provision is not registered with Ofsted separately from the school so is not on the Early Years Register and therefore there is no legal requirement for us to notify Ofsted of any serious accidents, injuries or deaths which occur in relation to the childcare we provide.

However, in line with the Statutory Framework for EYFS we will notify our local Child Protection Agency of any serious accidents, injuries or deaths which occur in relation to the childcare we provide to EYFS children.

Accident Investigation

- Investigations of all accidents will be undertaken so that control measures can be introduced to prevent recurrence. The majority of accidents will be low level requiring minimal investigation with the outcomes only needing to be noted on the KAHSC on-line Accident Recording System and in the Pupil Accident Book.
- More detailed investigations may be needed for more serious incidents and these will be conducted by a member of senior management. Any staff member involved in investigating accidents must understand what this entails – guidance on Accidents and Accident Investigations and appropriate forms can be found in General Safety Series G03.
- Where appropriate, risk assessments will be formally reviewed following accidents/near misses.

Accident Data Analysis

Accident/incident statistics are reported to the governing body on at least an annual basis to enable any patterns to be identified and to determine, where necessary, measures to prevent recurrence. A template Accident/Incident Analysis form can be found on the KAHSC website for schools to populate with local data which can be presented to governing bodies as a termly or annual report. Data can then be used to benchmark performance over time, within each school setting.

Retention of Documents

Staff, Volunteers, Visitors, Members of the Public, Contractors, Self-Employed	Records relating to accident/injury at work - Date of incident + 12 years. In the case of serious accidents a further retention period will need to be applied.
	The official accident book pages – Date of Incident + 6 years.
Pupils	Accident records (in any format) - Date of birth of the child + 25 years.
All	All records will be clearly marked and stored in such a way to prevent accidental use or loss. After the minimum record retention period has passed, we will destroy / delete the records concerned in line with the Information and Records Management Society – Records Management Toolkit for Schools (2016) .

References & Useful Links

<http://www.hse.gov.uk/riddor/>

DfE Statutory Framework for EYFS <https://www.kymallanhsc.co.uk/Document/DownloadDocument/8511>

The Childcare Register (General Childcare Register) Regulations 2008

IRMS Records Management Toolkit for Schools <https://www.kymallanhsc.co.uk/Document/DownloadDocument/8230>

KAHSC General Safety Series G01 <https://www.kymallanhsc.co.uk/Document/DownloadDocument/7621>

KAHSC General Safety Series G03 <https://www.kymallanhsc.co.uk/document/downloadaddocument/7861>

KAHSC Near Miss Report Form <https://www.kymallanhsc.co.uk/Document/DownloadDocument/8564>

KAHSC On-line Accident Recording/Reporting System

3.7 Liability Claims

Where the school receives a letter of claim or a claim notification form (CNF) in the event of a personal injury, we will:

- immediately forward the letter of claim or CNF to our Insurers, in order that they can acknowledge receipt of the letter of claim or CNF within one business day;
- promptly provide information requested by the Insurers, who are required to investigate employee injury claims within 30 business days;
- promptly provide information requested by the Insurers, who are required to investigate all other public liability claims (i.e. non-employees) within 40 business days.

3.8 First Aid

First Aid Requirements

Our first aid requirements are based on risk assessment, and include:

- designated workplace first aiders (names displayed on posters in school);
- adequate numbers of suitably qualified staff providing first aid provision for pupils (including paediatric first aiders where required);
- identified locations of first aid boxes with complete and “in date” contents;
- bum-bags/kits where required;
- first aid considerations for off-site visits including travelling first aid kits.

If there are any concerns about a pupil’s health or wellbeing, appropriate action will be taken dependent on the circumstances, e.g. contacting the emergency services or parents/carers to collect the pupil. If parents/carers cannot be contacted, a staff member will take the pupil to the nearest Accident and Emergency department.

Training for ALL First Aid personnel is arranged by a designated person who is responsible for ensuring that recertification training is arranged where necessary before existing certificates expire and ensuring that new persons are trained should first aiders leave.

First Aiders and Emergency First Aiders in the Workplace complete a three hour annual basic skills update in line with HSE Recommendations.

First Aid Supplies

These are located in appropriate locations throughout school and where required, are available for off-site visits and midday supervisors and contain items recommended in KAHSC General Safety Series G02. If at any time these articles are missing or stocks are running low, inform the designated person who is responsible for stocking first aid containers and ensuring all stock past its expiry date is discarded and replaced.

First Aid Records

School will keep a record of any first-aid treatment given by first-aiders and appointed persons. This will include:

- the date, time and place of the incident;
- the name (and class) of the injured or ill person;
- details of the injury/illness and what first-aid was given;
- what happened to the person immediately afterwards (for example went home, resumed normal duties, went back to class, went to hospital);
- name and signature of the first-aid or person dealing with the incident.

Supporting Pupils at School with Medical Conditions

All medication will be administered to pupils in accordance with the DfE document ‘Supporting Pupils at School with Medical Conditions’ and the school’s own Policy and procedures for Supporting Pupils at School with Medical Conditions held separately.

Individual Health care plans are in place for those pupils with complex or chronic/ongoing medical conditions. These plans are reviewed at least annually (or more frequently as necessary) and written precautions / procedures made available to staff.

Staff undergo general awareness training in relation to the school’s policy and procedures for Supporting Pupils at School with Medical Conditions and specific training related to health conditions of pupils and administration of medicines (by a health professional as appropriate).

Details of pupils with food allergies are adequately communicated to school meal providers (whether this be in-house catering teams, contracted catering teams or external providers), food technology teachers and wrap around care providers e.g. breakfast and after school clubs.

Aspirin should **not** be administered. Any prescribed medication e.g. tablets/medicine which a child may be required to have, must be administered by authorised staff only on the written instruction of the parent/guardian. Pupils who suffer from severe migraine or severe period pains may be given paracetamol based medication following written/verbal consent from the parent/guardian.

Head Injuries

Injuries to the head need to be treated with particular care. Any evidence of following symptoms may indicate serious injury and an ambulance be called.

- unconsciousness, or lack of full consciousness (i.e. difficulty keeping eyes open);
- confusion
- strange or unusual behaviour – such as sudden aggression
- any problems with memory;
- persistent Headache;

- disorientation, double vision, slurred speech or other malfunction of the senses;
- nausea and vomiting;
- unequal pupil size;
- pale yellow fluid or watery blood coming from ears or nose;
- bleeding from scalp that cannot quickly be stopped;
- loss of balance;
- loss of feeling in any part of body;
- general weakness;
- seizure or fit.

Where young people receive a head injury their parents/carers should be informed. In the case of pupils, this should be done immediately by telephone if symptoms described above occur. For more minor bumps etc. the parent should be informed when they collect the child or by sending a standard 'Bump Head' letter home with the child as appropriate.

NHS direct recommends that the person who is injured should sit quietly for the first 2 hours after the injury and be monitored for the next 48 hrs.

Dental Emergencies

Dental emergencies are likely to fall into two categories:

- The child who arrives at the setting with dental pain or sepsis, or who develops either in the time they are there;
- Injuries to the teeth and mouth.

Where a child arrives with dental pain or sepsis, managers should firstly endeavour to contact the parent/carer to establish whether they have taken, or will be taking, appropriate action. Any NHS Emergency Dentist Service will always try to help a child in an emergency, but it should be noted that such treatment is not normally possible unless parental consent has been obtained.

In cases of dental accident, such as teeth being fractured or knocked out, managers should again endeavour to contact the parent/carer to ascertain whether there is a family dentist the child can attend as an emergency patient. If there are other significant facial injuries as well as tooth damage, the child should go to hospital. If it is not possible to contact parents, or if managers need advice on how best to proceed, they should call the NHS 111 service or take the injured person to the nearest A&E department.

In cases where teeth are fractured, every effort should be made to find missing teeth or parts of teeth. On no account should anyone attempt to put back in a child's mouth a tooth or part of a tooth. These should be stored immediately in fresh milk or water and taken quickly to a dentist for professional advice.

Transporting Injured Pupils

Emergencies: If it is deemed to be an "emergency" or an otherwise serious injury, paramedics or an ambulance will be summoned to the school/location of the accident/incident. If there is any doubt about the seriousness of an injury, the Head teachers or person in charge will not hesitate to call an ambulance. The use of a school employees' or other persons' private vehicle to take the pupil to hospital should not be used in these circumstances.

The emergency contacts procedure for the injured pupil will also be activated with the parent(s)/carer(s) being advised to either come to the school or go direct to a specified hospital. Where the parent(s)/carer(s) is/are able to accompany the pupil in the ambulance, school employees will not usually need to be further involved. If however the parent(s)/carer(s) will be meeting the pupil at hospital, a school employee will need to accompany the pupil in the ambulance and arrangements made for the employee to be able to return to school once the pupil is in the care of the parent(s)/carer(s). Pupils should not be left unaccompanied at the hospital and therefore the school employee may have a protracted wait for the arrival of the parent(s) / carer(s).

Care will be taken to identify those pupils whose religion may conflict with emergency medical treatment.

Site Access for Emergency Services: Access to the school site for ambulances etc. should be available without delay. Where access is restricted for security reasons, the procedures for summoning an ambulance will include a designated person to open the gates etc.

In some circumstances it may be decided by the ambulance service that the "air ambulance" is required to transport a casualty to hospital and, where feasible, that landing within the school grounds is desirable. It will be the responsibility of the helicopter pilot to determine the safety aspects of any given landing site (atmospheric conditions, adjacent buildings, overhead cables, trees, people on the ground etc.) and the ambulance crew on the ground would direct other aspects of the situation.

Non-Emergencies: In less serious situations where paramedics or an ambulance is not required but it is considered that a visit to hospital or other medical facility is still needed, we will contact the pupils' parent(s)/carer(s) to inform them of

the situation and request that they arrange to collect their child from school and transport them accordingly. This is the recommended method.

Use of Staff Vehicles: However, if the parent(s)/carer(s) do not have access to private transport and a taxi is not appropriate or available, the Head teacher has the discretion to arrange for a school employee to take the injured pupil (and their parent/carers) to the nearest hospital or other medical facility in the employees' vehicle but a number of factors will be considered before agreeing to this method:

- the personal safety of the employee;
- the condition of the injured pupil and whether it is likely to deteriorate during the journey;
- weather/road conditions at the time;
- whether adequate staffing cover for the employee is available within the school or at the incident location;
- whether the employees' car is insured for business use;
- condition/road-worthiness of the employees' vehicle.

No school employee should transport a pupil to hospital without another appropriate adult in the vehicle to care for the child. A mileage allowance will be payable from the school budget.

Use of a Taxi: If a taxi is used, a member of staff must accompany a pupil. The cost may be claimed from the school account (petty cash). Use of a taxi would require only one member of staff. The taxi could be used in circumstances to take a pupil home where the parent/carers does not have transport or for dental emergencies.

Handing over the Responsibility for an Injured Pupil to the Parent: Initially it is the Head teacher or Manager's responsibility to endeavour to contact the parent/carers of an injured pupil to make arrangements for the necessary treatment.

If the parent/carers cannot be reached, it is the responsibility of the Head teacher or Manager to make appropriate arrangements and to contact the parent/carers at the earliest possible time. Until that has been done, the Head teacher or Manager is responsible for the pupil. It should not be left to the hospital, doctor or police to notify the parents, although they may wish to do so.

The responsibility for deciding whether medical treatment, such as an operation is required must be a decision for the medical staff involved. However, if it has not been possible to contact the parent/carers, the medical staff may seek the consent of the teacher acting 'in loco parentis'. Although there can be no hard and fast rules about the line that the teacher should take in this situation, it is extremely unlikely that a parent/carers would succeed in any legal action against a teacher who has consented to a pupil being treated.

It occasionally happens that a pupil can be delivered to his/her parent/carers, but that the parent/carers is not in a position to seek immediate treatment. For example, a mother may have a young baby whom she cannot leave and could be distressed if suddenly asked to cope on her own. Head teachers and Managers are, therefore asked to satisfy themselves that the parent/carers can take over the responsibility for the pupil before returning to the school.

References and Useful Links

The Health and Safety (First-Aid) Regulations 1981 <http://www.hse.gov.uk/pubns/books/l74.htm>
KAHSC General Safety Series G02 <https://www.kymallanhsc.co.uk/Document/DownloadDocument/7620>
KAHSC Medical Safety Series M07 <https://www.kymallanhsc.co.uk/Document/DownloadDocument/8062>
DfE Statutory Framework for EYFS <https://www.kymallanhsc.co.uk/Document/DownloadDocument/8511>
DfE Supporting Pupils with Medical Conditions <https://www.kymallanhsc.co.uk/Document/DownloadDocument/8528>
School's Supporting Pupils with Medical Conditions Policy & procedures

3.9 Disease/Infection Control

If a child is absent through illness, it is the responsibility of the parents to inform the school of the reasons for absence. If no contact is made by a reasonable time the school will contact the parents (parents will be aware of the school's protocols for absence reporting).

If doubt is expressed regarding a child's health during school hours, parents are contacted and requested to take the child home or to seek medical advice and a request that information be relayed to the school as soon as possible. Should there be difficulty in obtaining parental contact and a condition is considered serious, the child will be removed to hospital by school staff.

When pupils are suffering from a disease or infection, parents will be advised to seek professional medical advice regarding the date the child can return to school without fear of infecting other pupils. If necessary, parents may be notified by letter of any serious threats to the health of pupils.

Further advice about the Control of Infectious Diseases can be obtained from the Public Health England - Guidance on infection control in schools and other childcare settings - Sept 2014 that should be displayed in school and the Infection

Control in Schools and Other Settings Poster July 2015 updated by KAHSC. Pupils will only be excluded from school if guidance dictates this is necessary.

All staff should take precautions to avoid infection and must follow Standard Infection Control Precautions. Staff must wear single-use disposable gloves and make use of hand washing facilities, and should take care when dealing with blood or other body fluids and disposing of dressings or equipment. When administering first aid or dealing with blood or body fluids staff will wear single-use disposable gloves and make use of hand washing facilities. Midday supervisors will carry a small supply of the disposable gloves with them when supervising play. Dressings, cleaning cloths or equipment will be disposed of appropriately. Individuals treating colleagues/pupils must ensure that their own cuts/grazes are covered to reduce the risk of transmission of infection.

Blood Borne Viruses (BBVs)

The following guidelines apply irrespective of whether a virus is known to be present or not as they represent sound first aid procedures.

Within the workplace, BBVs are mainly transmitted by direct exposure to blood or other body fluids contaminated with infected blood. Direct exposure can happen through accidental contamination by a sharp instrument such as a needle or broken glass. Infected blood may also spread through contamination of open wounds, skin abrasions, skin damaged due to a condition such as eczema or through splashes to the eyes, nose or mouth.

Managing the risk: For first aiders in the workplace, the risk of being infected with a BBV while carrying out their duties is small. There has been no recorded case of HIV or hepatitis B virus being passed on during mouth-to-mouth resuscitation and therefore the procedure should not be withheld in a life saving emergency.

All First aiders are advised to follow the following precautions to reduce the risk of infection:

- cover any cuts and abrasions on their skin with a waterproof dressing;
- wear suitable disposable gloves when dealing with blood or any other body fluids;
- use suitable eye protection and a disposable plastic apron where splashing is possible;
- use devices such as face shields when giving mouth-to-mouth resuscitation (but only if trained to use them);
- hands should be washed before and after administering first aid;

It is not normally necessary for first aiders in the workplace to be immunised against hepatitis B virus unless the risk assessment indicates that it is appropriate; immunisation is not available for other BBVs.

Action after possible infection with a BBV: If contamination with blood or other body fluids does occur, the following action should be taken without delay:

- wash splashes off your skin with soap and running water;
- if your skin is broken, encourage the wound to bleed, do not suck the wound – rinse thoroughly under running water;
- wash out splashes in your eyes using tap water or an eye wash bottle, and your nose or mouth with plenty of tap water – do not swallow the water;
- record the source of contamination;
- report the incident to your line manager as appropriate;
- prompt medical advice is important. Treatment might be appropriate but to be effective, it may need to be started quickly and therefore contact should be made with the nearest Accident and Emergency department without delay.

Decontamination / Disposal of waste

It is possible for HIV and hepatitis B virus to remain infectious in dried and liquid blood for a considerable time and if materials become contaminated with blood or body fluids, they will require decontamination in a way that is designed to inactivate BBVs, mainly by using heat or chemical disinfection, or safe disposal. We have a procedure for dealing with spillages and other forms of contamination and staff have been made familiar with it:

- disposable plastic gloves must be worn and paper towels used when mopping up blood or body fluids. These should be sealed in plastic bags and safely disposed of in line with local waste disposal arrangements;
- clothing may be cleaned in a washing machine using the hot cycle (min 60° C);
- surfaces and re-usable personal protective equipment (e.g. eye protection) should be wiped down/cleaned with a solution of a suitable disinfectant.

References and Useful Links

Public Health England Guide on Infection Control -

https://www.gov.uk/government/uploads/system/uploads/attachment_data/file/353953/Guidance_on_infection_control_in_schools_11_Sept.pdf

KAHSC [Infection Control in Schools and Other Settings Poster July 2015](#)

NHS Choices Website - <http://www.nhs.uk/Pages/homepage.aspx>

HSE - [Blood Borne Viruses in the Workplace document](#)

Standard Infection Control Precautions

http://www.nhsprofessionals.nhs.uk/download/comms/cq1_nhs_standard_infection_control_precautions_v3.pdf

KAHSC Medical Safety Series M06 <https://www.kymallanhsc.co.uk/Document/DownloadDocument/7124>

3.10 Document Management / Retention of Documents

All documents which form part of the health and safety management system will include suitable document control so it is clear which version of each document is the most current and to avoid using obsolete documents. This will simply appear in the header or footer of each document to include the Issue No. and the last review date.

Any previous versions of documents will either be suitably marked to show they have been superseded and should not be used, then properly archived or destroyed if no longer required. Archived documents (or document boxes) will be clearly marked as 'Archive' with the date(s) they cover and the date that they can be destroyed. Archiving/retention of documents and records will be done in line with the Information and Records Management Society (IRMS) Records Management Toolkit for Schools.

Electronic archiving is acceptable as we have a sound electronic back-up off site.

References and Useful Links

IRMS Records Management Toolkit for Schools <https://www.kymallanhsc.co.uk/document/downloaddocument/8230>

3.11 Control of Hazardous & Dangerous Substances (COSHH & DSEAR)

Hazardous Substances

Hazardous substances are those that are capable of causing adverse health effects e.g. toxic, irritant, corrosive, oxidising etc. and can include cleaning chemicals, adhesives, paints, pesticides, dusts, substances used for science or design technology teaching, and biological agents.

We use CLEAPSS (Consortium of Local Education Authorities for the Provision of Science Services) specialist advice and support in science and technology. CLEAPSS provide COSHH information for the curriculum-based chemicals.

To help us in complying with COSHH we:

- identify all hazardous substances and work involving potential exposure to hazardous substances;
- prevent work with hazardous substances, and/or substitute hazardous substances for less hazardous ones where possible;
- where not possible we obtain the Manufacturer's Safety Data Sheet for the product and complete a COSHH assessment for all work involving exposure to hazardous substances;
- store hazardous substances securely using appropriate signage;
- store chemicals in suitable containers with contents and hazards clearly labelled and never decant products from their trade containers into unlabelled or hand labelled bottles;
- segregate incompatible chemicals (e.g. oxidising agents and solvents);
- store hazardous liquids in significant quantities in suitable secondary containment to safely contain any leakage;
- provide suitable Personal Protective Equipment (PPE).

Dangerous Substances

Dangerous substances are those that are flammable, highly flammable, extremely flammable and explosive under the Dangerous Substances & Explosive Atmospheres Regulations (DSEAR) 2002.

To help us comply with DSEAR we:

- find out what dangerous substances are in the workplace and what the risks are;
- put control measures in place to either remove those risks or, where this is not possible, control them;
- put controls in place to reduce the effects of any incidents involving dangerous substances;
- prepare plans and procedures to deal with accidents, incidents and emergencies involving dangerous substances;
- make sure employees are properly informed about and trained to control or deal with the risks from the dangerous substances;
- identify and classify areas of the workplace where explosive atmospheres may occur and avoid ignition sources (from unprotected equipment, for example) in those areas.

Separate DSEAR Risk Assessments are **NOT** required for dangerous substances where the **risk is low or trivial** and risks have been adequately assessed as part of other general or Fire risk assessments.

References and Useful Links

<http://www.cleapss.org.uk/>

Control of Substances Hazardous to Health Regulations 2002 (as amended) <http://www.hse.gov.uk/coshh/>

Dangerous Substances & Dangerous Atmospheres Regulations 2002 <http://www.hse.gov.uk/fireandexplosion/dsear.htm>

KAHSC General Safety Series G38a <https://www.kymallanhsc.co.uk/Document/DownloadDocument/8161>

KAHSC General Safety Series G38b <https://www.kymallanhsc.co.uk/document/downloadaddocument/8962>

KAHSC Codes of Practice for Caretakers, Cleaning, Catering and the Primary Curriculum

3.12 Asbestos Management

A variety of Management and Demolition/Refurbishment Asbestos Surveys have been undertaken in school, copies of which are available at all times. The governors and Head teacher are responsible for the safety of contractors and for the safety of those employed and/or are working within the school. Contractors, maintenance teams and all staff will be briefed on the location and condition of any ACM's in the areas where they are to be working, provided with a copy of the Asbestos Register (and any associated building plans) and briefed on the control measures to be implemented.

We have an Asbestos Management Plan which includes details on how we aim to manage asbestos including procedures for dealing with planned and emergency work involving asbestos containing materials. This Management Plan is implemented at all times. We will, as part of our Asbestos Management Plan, implement a system locally for regularly checking the condition of any remaining presumed or identified ACM's on site, to monitor its condition and look for any signs of deterioration, taking action where necessary. This will be done formally on at least a termly basis by a designated person although staff are encouraged to report any obvious signs of damage as soon as they are identified so that remedial action can be taken as a matter of urgency. We will ensure that the Asbestos Register is updated whenever additional asbestos surveys are undertaken or any asbestos removal, repair or encapsulation work takes place.

All relevant staff will receive appropriate Asbestos Awareness training.

Current guidance requires removal of all ACM's likely to be affected by demolition or major structural alteration. Where any work will involve demolition or major structural alterations a Refurbishment/Demolition survey will be arranged at the planning stage of the job so any ACM's can either be removed prior to work starting OR the work designed so as to avoid disturbing ACM's.

Where ACM's are removed or repaired, competent contractors will be used to remove/treat the asbestos. The contractor will be required to provide evidence that they have notified the HSE providing the correct information on form FOD ASB5 for notifiable work. A four stage clearance certificate should be provided following the completion of asbestos removal work which required an enclosure and following asbestos removal work Waste Consignment notes should be provided to school to show that removed Asbestos was treated as hazardous waste and disposed of accordingly.

Where appropriate, ACMs will be suitably labelled in line with KAHSC General Safety Series G07.

Following any works that may affect the school asbestos register, evidence/certificates will be sent to the Local Authority's Asbestos Coordinator

References and Useful Links

HSE Asbestos - <http://www.hse.gov.uk/asbestos/>

DfE Asbestos Management in Schools [Click here to access](#)

KAHSC General Safety Series G07 <https://www.kymallanhsc.co.uk/Document/DownloadDocument/7624>

School's Asbestos Surveys and Management Plan

3.13 Water Hygiene Management

Control of Legionella

The Head teacher (or nominated deputy) acts as the Responsible Person under the Approved Code of Practice on legionella control. We also have support from KAHSC where required.

We have arranged for a contractor to undertake a water hygiene risk assessment, and will arrange for this to be reviewed at least every two years by a contractor who is registered with the Legionella Control Association for this purpose (or more frequently if there are any significant changes to our water system).

Water hygiene monitoring will be carried out in accordance with the findings of the risk assessment. Where this is undertaken by a contractor, the contractor will be registered with the Legionella Control Association for the category of work they undertake. Any remedial work will be carried out by a competent person.

The school's Responsible Person reviews recommendations made in risk assessments and monitoring visit reports to identify and authorise required works.

Any infrequently used outlets, e.g. showers, spray taps etc., will be flushed through (hottest temperature possible) every week in which they have not been in use. Shower/spray tap heads will be removed and de-scaled at the beginning of each term. Written records of these checks will be held.

Where outlets are no longer in use, arrangements will be made to remove them and the pipework leading to them.

Water temperatures of nominated outlets/taps (sentinel outlets) are monitored on a monthly basis. Records of these checks are kept.

Records will be retained throughout the period they are current and for at least two years afterwards. This includes records of any monitoring inspection, test or check carried out, and the dates, for at least five years.

Preventing Scalds and Burns

We will ensure measures are in place to prevent scalds and burns to vulnerable adults and young children from hot water and surfaces/pipes. This includes solutions such as thermostatic mixing valves to hot water outlets used by them (which will be adequately maintained), using low surface temperature radiators, locating sources of heat out of reach, e.g. at high-level or guarding the heated areas, e.g. providing radiator covers, covering exposed pipework.

References and Useful Links

Legionnaires' disease. The control of legionella bacteria in water systems

ACOP www.hse.gov.uk/pubns/books/L8.htm

Control of Substances Hazardous to Health Regulations 2002 (as amended)

HSE Guidance 'Legionella - A Brief Guide for Duty Holders' [Click here to access](#)

KAHSC General Safety Series G15

School Premises Regulations 2012

Compliance Monitoring in Council Buildings <https://www.kymallanhsc.co.uk/Document/DownloadDocument/7994>

School's Water Hygiene Risk Assessment and maintenance records

Building Bulletin 87

Workplace (Health, Safety and Welfare Regulations) 1992

HSE <http://www.hse.gov.uk/healthservices/scalding-burning.htm>

3.14 Radon

Our School was assessed for radon levels through a monitoring programme in 2010 run by the HPA and organised by the LA. Monitors were placed in strategic locations in our school for a period of three months, whereupon the monitors were returned to the HPA for analysis and further action taken by the LA where required.

References and Useful Links

HSE <http://www.hse.gov.uk/radiation/ionising/radon.htm>

Management of Health and Safety at Work Regulations 1999

Ionising Radiation Regulations 1999

Compliance Monitoring in Council Buildings <https://www.kymallanhsc.co.uk/Document/DownloadDocument/7994>

3.15 Equipment and Maintenance

- All employees are required to inspect visually their work equipment, to report any faults before use and not to use this piece of equipment if it is deemed unsafe, i.e. checking for cable damage etc.;
- All employees are reminded of their obligation to participate in the training when provided to ensure that they understand how to work safely with all equipment that they use, and to work to the guidelines provided in the training and subsequently by their manager;
- Any faulty piece of equipment is to be taken out of service, labelled as out of service, and moved to an area where it cannot be used. It must not be returned to normal use unless it has been checked by a competent person and repaired if necessary;
- No private equipment is to be used unless it has been deemed safe by a competent person.
- All systems, plant and equipment will be maintained in line with manufacturer's instructions and industry guidance. All servicing and maintenance will be carried out by competent persons (in-house or). Records of servicing and maintenance will be held within our Buildings Register.

References and Useful Links

KAHSC General Safety Series G25 <https://www.kymallanhsc.co.uk/Document/DownloadDocument/8781>

School's Equipment Maintenance Schedule and records/Buildings Register

School's Health and Safety Management Plan

3.16 Workstations / Display Screen Equipment

The school ensures that all staff classed as 'users' of DSE equipment:

- Have access to a safe workstation that meets the minimum requirements of the Health and Safety (Display Screen) Regulations;
- Undertake an annual DSE self-assessment which is reviewed where there are significant changes including change of workstation, reports of physiological problems, following the introduction of control measures etc.;
- Can request a paid eyesight test and payment for the cost of single vision spectacles if these are required for DSE work.

Due to their compact nature, laptops are not designed to be used for extended periods of time. When they are used for longer periods, they will be used with a laptop raiser and a separate keyboard. Where laptops are supplied to staff or pupils to use at home, we ensure that users are provided with information on the safe and proper use of laptop computers.

Interactive white boards will be fixed and used in accordance with the manufacturer's instructions. Staff should ensure that they familiarise themselves with the relevant user guidance. All display screens and interactive whiteboards must be shut down when not in use, rather than being left on standby, both to save energy and reduce the risk of fire.

References and Useful Links

Display Screen Equipment Regulations 1992 as amended 2002

KAHSC General Safety Series G13 <https://www.kymallanhsc.co.uk/Document/DownloadDocument/8068>

KAHSC General Safety Series G20 <https://www.kymallanhsc.co.uk/Document/DownloadDocument/8060>

HSE Website - <http://www.hse.gov.uk/msd/dse/>

3.17 Information Technology (IT) and Online Safety

- The layout of equipment will be appropriate with sufficient room for each student.
- Seating will be suitable i.e. ideally height and comfort adjustable for individual users.
- Lighting, heating and ventilation levels will be adequate for the types of activities undertaken.
- Combustible items in the IT workroom will be stored appropriately.
- Electrical sockets and electrical extension leads will be used responsibly e.g. not overloaded, surge protected etc.
- The server unit is housed appropriately e.g. where it cannot overheat, away from combustible materials, wires kept tidy etc.
- The fabric of the room and equipment is in a generally good condition, and the room is kept tidy.
- It is recognised that the use of new technologies presents particular challenges and risks to children both inside and outside of school. We will ensure a comprehensive curriculum response to enable all pupils to learn about and manage the associated risks effectively and will support parents and the school community (including all members of staff) to become aware and alert to the needs of keeping children safe online.
- We have a suitable Online Safety Policy which includes acceptable use agreements for staff, Governors and pupils, reinforces the need for parents to act responsibly when using Facebook or other social networking sites and includes references to extremism, radicalisation and child sexual exploitation.
- There are robust security measures in place to protect potentially sensitive documents being accessed at home or being taken off site using pen drives, which must be encrypted. Our arrangements for security are fully discussed in the school Online Safety Policy held separately.

References and Useful Links

School's Online Safety, Child Protection, Data Protection & Whole School Behaviour Policies & Home School Agreement

KAHSC General Safety Series G08

3.18 Policy on the Use of Mobile Phones

Pupils

We discourage and advise all parents to discourage, pupils from bringing mobile phones to school on the grounds, that they are valuable and may be lost or stolen. Where a pupil does bring a mobile phone to school, the phone must remain switched off during the school day and may not be used, for any purpose on school premises, grounds or during off-site school activities (such as school swimming or sports activities). The only exception to this would be in an emergency or with the express approval of a member of school staff. The Head teacher may, at their discretion, allow any member of staff to approve such requests or may nominate a specific person to consider such requests.

Where a school pupil is found by a member of staff to be using a mobile phone, as above, for any purpose, the phone can be confiscated from the pupil in line with the Whole School Behaviour Policy.

Employees

Our Online Safety policy and Staff Code of Conduct clearly state that mobile phone or electronic communications with a student at our school is not acceptable other than for approved school business e.g. coursework, mentoring. Where it is suspected that a child is at risk from internet abuse or cyber bullying we will report our concerns to the appropriate agency.

Staff should be particularly aware of the professional risks associated with the use of electronic communication (e-mail; mobile phones; texting; social network sites) and should familiarise themselves with advice and professional expectations outlined in Guidance for Safer Working Practice for Adults who Work with Children and Young People, the school's Online Safety Policy and the Cumbria LSCB document 'Online Communication Code of Conduct for Staff Working with Children' and the LSCB guidance on Texting.

Images of children should normally only be taken on school equipment i.e. digital camera or mobile phone; if personal equipment of staff is used, the individual should inform another member of staff, show them the images and ensure that the downloading and subsequent deletion of the images from the personal device is witnessed (if possible by the same member of staff who witnessed the original image taking).

References and Useful Links

KAHSC General Safety Series G10 <https://www.kymallanhsc.co.uk/Document/DownloadDocument/7627>

KAHSC General Safety Series G21 <https://www.kymallanhsc.co.uk/Document/DownloadDocument/8880>

School's Child Protection, Online Safety, Data Protection & Whole School Behaviour Policies & Home School Agreement

3.19 Child Protection

The school has established a separate Child Protection Policy and supporting procedures in line with the procedures and practice of the Local Authority as part of the inter-agency safeguarding procedures set up by the Lancashire Safeguarding Children Board (SCB). <http://www.lancshiresafeguarding.org.uk/>.

3.20 Use of Pupils Images

The school recognises its duties under the Data Protection Act 1998. Due care will be taken with records management and in the use of any media which clearly identify pupils. Where schools allow access to a local newspaper photographer, they are not caught by DPA unless they provide the personal details of the pupils in the photographs.

If the names of those in the photograph were collected directly from the participants (subject to the wishes of parents and guardians of pupils) the school would not be releasing personal data subject to the Act at all. Alternatively if the school had canvassed the wishes of parents and guardians and they had agreed to the release then there would be no question of the DPA preventing disclosure.

For most purposes consent obtained from parents in advance will normally be sufficient. However, particular care is necessary when images are taken during activities such as swimming or PE. It is recommended that parental consent be obtained for the use of the final images, although this may not be possible for news media coverage.

The school will seek parental consent for use of data and images related to a child when a child first starts school - consent does not need to be gained annually – the onus will be placed on parents/carers to notify school if they wish to withdraw consent. A Sample Consent Form can be found within General Safety Series G21 on the KAHSC website. Whilst this may be useful in alerting the school to children whose parents object, it needs to be used carefully and with safeguards.

During the course of the year there may be opportunities to publicise some of the activities that children are involved with, this may involve filming or photographing children for use in local media.

Photography or filming will only occur with the permission of the Head Teacher and under the strict supervision of a teacher. Where filming or photography is carried out by the news media, children will only be named when there is good reason i.e. prize winning. Home addresses will never be disclosed.

References and Useful Links

KAHSC General Safety Series G21 <https://www.kymallanhsc.co.uk/Document/DownloadDocument/8880>

KAHSC General Safety Series G27

School's Data Protection, Child Protection & Online Safety Policies

Data Protection Act: <http://www.legislation.gov.uk/ukpga/1998/29/contents>

3.21 Manual Handling

Manual handling is the transporting or supporting of loads (inanimate- objects; animate – people) by hand or bodily force, which includes, carrying, lifting, pushing and pulling. Manual handling may result in adverse health that is caused

by a single accident (e.g. strained/torn muscles, dropped loads, cuts/abrasions etc.) or sustained over a longer period (bad back, worn joints etc.).

The Manual Handling Operations Regulations 1992 require the following measures to be considered in hierarchical order:

- avoid hazardous manual handling operations so far as is reasonably practicable;
- assess any hazardous manual handling operations that cannot be avoided;
- reduce the risk of injury so far as is reasonably practicable.

Risk Assessment

The school will undertake manual handling risk assessments for all unavoidable hazardous manual handling activities. This includes the handling of people as well as objects. To ensure control measures remain effective, all assessments will be reviewed regularly or when there have been significant changes:

- to the work practice or workplace/environment;
- to safety equipment provided;
- to the nature of the load;
- a substantial increase in the amount of time performing manual handling operations;
- a substantial change in other task requirements, e.g. more speed or accuracy.

Training

Induction: All employees should be inducted into good manual handling techniques and provided with information and instruction before being exposed to manual handling risks. This should form part of all new starter Induction training.

Manual Handling Practical: Where moving and handling objects or people forms a significant part of an employee's role, they should undertake specific training before engaging in the activity.

Assessors: Should receive training to enable them to: identify hazards (including less obvious ones) and assess risks from the type of manual handling being done; use additional sources of information on risks as appropriate; draw valid and reliable conclusions from assessments and identify steps to reduce risks; make a clear record of the assessment and communicate findings to handlers and others who need to take action and to recognise their own limitations so that further expertise can be called on if necessary.

Pupils: Pupils are supervised when moving and handling equipment such as PE mats or furniture for example and are shown how to do so safely before an activity takes place.

Health

New employees should complete a pre-employment health enquiry form before appointment. The Head teacher/Manager should ensure the employee is aware of the moving and handling requirements of the job. If the employee is referred to an Occupational Health adviser for assessment, they will advise whether the employee is fit to undertake the role, or whether adjustments are recommended. It is the Head teacher/Manager's responsibility to decide whether any adjustments recommended can reasonably be put in place.

Where an existing employee's health condition is being affected by the manual handling activity, or where the manual handling activity causes a health condition, the Head teacher/Manager can refer them to an occupational health adviser. In extreme cases it may be necessary for a particular member of staff to be taken off duties that involve manual handling.

Where an employee has advised their Head teacher/Manager they are pregnant, the Head teacher/Manager should complete a New and Expectant Mother Risk Assessment with the employee (refer to General Safety Series G24 on the KAHSC website for further guidance). Advice and support can be obtained from Kym Allan Health and Safety Consultants.

Reporting injury and ill health

Any manual handling incident, including ill health that is suspected of being caused or aggravated by manual handling activities, should be reported and investigated in line with Accident Reporting Procedures. It may also be appropriate to refer the employee to an Occupational Health Adviser, where the injury affects their work or work continues to affect their injury.

References and Useful Links

Manual Handling Operations Regulations 1992 <http://www.hse.gov.uk/msd/manualhandling.htm>

KAHSC General Safety Series G23 <https://www.kymallanhsc.co.uk/Document/DownloadDocument/8069>

Manual Handling of Objects Training - available from KAHSC using 'allocated contact time', Tel: 01228 210152. Moving and Handling of People Training - available from Learning Support Services, Tel: 01900 706090

3.22 Working at Heights

Ladders & Step Ladders

- If it is necessary to gain access to heights which cannot be reached from the ground, proper access equipment, e.g. kick stools, step ladders, ladders and tower scaffolds, must be used. It is NOT acceptable to use chairs as a means of access. Wherever possible, work at height will be avoided. Where it cannot be avoided, suitable equipment and procedures will be put in place to minimise risk.
- Ladders and stepladders will only be used for jobs of short duration where there is no suitable alternative access.
- Staff using ladders and stepladders will receive training and instruction in their safe use. Ladders and stepladders will not be used by pupils.
- The only ladders and stepladders approved for use will be those constructed and marked to EN131, or to BS 1129:1990 Class 1 or BS 2037:1994 Class1.
- Each time a ladder is used, the user should check for visual signs of instability or deterioration.
- Ladders and stepladders will be subject to formal routine in-house checks to ensure they remain in a safe condition. Defective ladders will be taken out of service immediately and labelled appropriately until repaired or disposed of.
- Ladders & stepladder will be stored where they are protected from continual exposure to bad weather in well-ventilated areas. Timber ladders and stepladders will not be stored in boiler rooms or adjacent to radiators, steam pipes or other sources of heat, so as to avoid deformation.
- Ladder will be well supported throughout its length to prevent weakening of the joints. They will not be hung so that the weight is carried by the rungs, but will be stored on edge clear of the ground in racks or wall brackets (horizontally). Stepladders may be stored vertically.
- Ladders and steps will be secured to avoid use by inappropriate persons i.e. trespassers for example.

Mobile Tower Scaffolds

- Access towers or platforms will only be used in accordance with manufacturer's instructions.
- Guard rails must be in position around the platform when the platform is occupied
- Access to a platform must be by ladder secured to the narrowest side of the tower at the top and bottom, unless a built in internal ladder is provided and not by climbing up the outside of the tower frame.
- If any of the components or any joints of the tower unit are missing or damaged the unit should be taken out of use and labelled 'Warning – this scaffold is unsafe and must not be used'.
- Mobile scaffolding must never be mounted without first locking the wheels
- Never attempt to use a ladder on an access tower to increase reach.
- Mobile scaffolding must never be moved with a person on it, neither should any equipment be left on the platform whilst it is in motion
- Whenever tower scaffolds are in use provision must be made to prevent unauthorised access by providing barriers or tapes around the base.
- Persons who erect, alter, dismantle or inspect any type of tower scaffold must be competent to do so, or be supervised by a competent person. Competent persons should have attended a formal training course, e.g. Prefabricated Access Suppliers and Manufacturers Association (PASMA) certificate or equivalent.
- In order to maintain mobile access towers or platforms in a satisfactory and safe condition it is necessary to carry out regular inspection and maintenance.
- Formal annual inspections of mobile access towers will be carried out and recorded.
- Repairs should only be carried out by personnel approved by the manufacturer or supplier.

Trestles

- Lightweight staging or mobile access scaffold should be used in preference to trestles wherever possible.
- Toe boards and guardrails must be incorporated into platforms above 2m and a means of fall prevention is required.
- Trestles should not be used for access above 4.5m and should only be used for light work or relatively short duration.
- Lightweight staging should be used in preference to boards.
- All equipment must be checked to ensure it is in good condition before use to ensure there are no loose or damaged cross bearers, the hinges are in good order and that there are no defective stiles.
- The moving and erection of trestles must only be undertaken by persons that are competent to do so and those using trestles must not over-reach.

References and Useful Links

HSG33 - Health and Safety in Roof Work <http://www.hse.gov.uk/pubns/books/hsg33.htm>

The Work at Height Regulations 2005 (as amended) <http://www.hse.gov.uk/pubns/indq401.htm>

HSE Safe Use of Ladders and Stepladders <http://www.hse.gov.uk/falls/ladders.htm>

KAHSC General Safety Series G19 <https://www.kymallanhsc.co.uk/Document/DownloadDocument/8010>

KAHSC Code of Practice for Caretakers <https://www.kymallanhsc.co.uk/Document/DownloadDocument/8019>

3.23 Fire and Emergency Arrangements

Comprehensive arrangements are in place for fire safety and emergencies. We also have separate fire and emergency evacuation procedures, a Fire Safety Management Policy, a Critical Incident and Recovery Plan, a Fire Risk Assessment and a Premises Fire Log Book.

Fire Risk Assessment

A documented fire risk assessment is in place, kept up to date and made available to all staff. A copy of this is also held off-site. The risk assessment will be reviewed annually or at such earlier time as there is reason to suspect it is no longer valid or there has been a significant change in the matters to which it relates.

Responsible Person

The Head teacher is the Responsible Person for Fire Safety and will be responsible not only for the safety of employees, but for that of any person lawfully on the premises, or in the immediate vicinity of the premises and at risk from a fire on the premises. They are responsible for implementing the Fire Safety Management Policy.

Fire Safety Manager(s)

The Fire Safety Manager is the person who will take overall control during the evacuation process. Their duties include:

- ensuring the fire and rescue service is called where required;
- coordination of people at assembly points and ensuring the evacuation is conducted effectively;
- delegating certain tasks to other suitable personnel;
- liaison with the emergency services on arrival and provision of key information requested by the Fire and Rescue Service, e.g. results of roll call; location of fire (if known); type, locations and quantities of dangerous substances; the nearest water supply fire hydrant; provision of information on locations of asbestos; the gas and electricity main shut-off valve locations; the Fire Risk Assessment;
- initiating disaster recovery procedures;
- ensuring that no-one is permitted to re-enter the building until the Fire and Rescue Service have given the 'all clear'.

The Head teacher or nominated person(s) will act as the Fire Safety Manager and, with the support of all staff, ensure all fire safety checks are carried out e.g. weekly manual call point testing, monthly emergency lighting testing, monthly inspections of fire-fighting equipment etc.

Fire Wardens

Suitable numbers of trained fire wardens will be in place. Their duties include:

- helping children and others (i.e. visitors) to leave the premises;
- checking their area to ensure everyone has left – undertaking sweeps of classes, toilets, cloakrooms etc.;
- using appropriate fire-fighting equipment if trained and safe to do so;
- reporting to the Fire Safety Manager;
- shutting down dangerous equipment and operating emergency shut-off switches;
- taking the register/roll call for their particular class, and immediately reporting anyone who is known to be off-site or missing to the Head teacher and/or liaising with the Fire and Rescue Service.

Fire Drills

Fire evacuation exercises are held at the beginning of each new term and records are held in the fire logbook. Drills are conducted at varying times of day to ensure that ALL staff and pupils can participate in fire practices including for example, part time staff and pupils and out of hour's premises users.

Training

All staff will receive basic fire safety induction training and attend refresher sessions at pre-determined intervals.

Pupils/students/children/young people will be supplied with some form of fire safety training so that they are aware of the actions to be taken in the event of a fire.

The **Responsible Person, Fire Safety Manager(s) and Fire Wardens** will require more comprehensive training.

Evacuation Assistants (those who assist others with additional needs) will receive Instruction on the use of any relevant evacuation devices such as Evac Chairs for example; awareness of the content of any PEEPs or GEEPs in place for areas they would be expected to cover with the evac chair; manual handling training; and training and instruction in the means of Assistance available for the building.

In the Event of Fire

Raising the alarm - any member of staff (or visitor) discovering a fire must raise the alarm using the fire alarm manual call points located around school (where present) and shouting "Fire". If fire is detected by automatic detectors, this will trigger the fire alarm.

Fire Action Notices detailing the action to take in the event of fire are displayed next to each fire alarm manual call point and final exit door. Plans detailing escape routes, location of fire extinguishers etc. are also clearly displayed around the building and within classrooms. These are intended to provide emergency information for those persons/visitors who are unfamiliar with the premises.

Staff, Pupils & Visitors - nominated persons are responsible for taking the visitors book, staff signing in/out book/board and class registers to the assembly point to ensure that all persons are accounted for by way of a roll call.

Assisting **vulnerable people/people with disabilities** - where pupils or staff in school have disabilities, e.g. mobility difficulties, visual or hearing impairment, or special needs, Personal Emergency Evacuation Plans (PEEPs) will be developed outlining how they will be evacuated or assisted to evacuate the premises.

General Emergency Evacuation Plans (GEEP's) will be developed for members of the public and other non-regular visitors with additional needs. A sign will be displayed at reception highlighting that we operate a scheme of assisted evacuation where required.

Catering staff - must ensure that if the alarm is raised they activate any safety cut-off valves where these are available, and also any electrical or gas equipment that they might be using (if safe to do so), and evacuate the building by the nearest available exit.

Contractors/visitors - all contractors or visitors entering the school will be familiarised with the school's fire safety arrangements on signing in. Any outside group hiring the school's facilities will be instructed in the fire procedures and expected fire safety standards prior to using the building.

Assembly points - children, visitors and staff will gather at their agreed assembly point(s) outlined on Fire Action Notices displayed in school. Class teachers and/or other nominated staff will act as Fire Wardens and ensure that roll call information is provided to the Fire Safety Manager.

Lunchtimes - where an evacuation occurs at lunchtimes, Midday Supervisors are responsible for co-ordinating an evacuation from dining areas, and registers will be taken to assembly points to enable a roll call to be taken.

Variations to the Plan

Variation to the usual plan may occur in specific instances including:

- **Performances/Events** - Evacuation Plans are completed before each performance/event involving a significant increase of people.
- **Failure of fire warning/detection systems** - If any safety systems were to fail, alternative arrangements are in place to raise the alarm throughout the premises to enable occupiers to evacuate quickly.
- **Lone Working** - people who might be lone working will be made aware of the emergency actions they must take in the event of a fire.

Escape Routes, Final Exits and Fire Doors

All escape routes will be kept clear of obstruction and are clearly marked with British Standard or European Standard Fire Exit signs and directional arrows where appropriate. All staff must be aware of the location of final exits and alternative escape routes.

All exits will be readily openable from the inside without the use of a key (e.g. panic release devices or thumb turn locks) at all times including outside normal school hours, e.g. during evening performances or after school meetings.

The school operates a formal system for checking fire doors and fire exit doors to ensure they remain in safe condition, e.g. they close/meet properly, intumescent strips/smoke seals are in good condition, self-closing devices are operational, final exits can be easily opened without the use of a key etc. The Fire Safety Manager or nominated representative is responsible for checking and recording in the fire log book the condition of fire doors and final exit doors and reporting any defects on a monthly basis.

Fire-fighting Equipment

This equipment is provided throughout the premises in suitable locations with the most appropriate appliance available for the risks in that area. Equipment must only be used by trained staff to tackle small fires if it is safe to do so and to assist escape from fire. Means of escape must not be compromised when tackling a fire.

Arson Prevention

Refer to the School Fire Safety Management Policy held separately which includes our Arson Vulnerability Assessment and Arson Prevention Strategies.

Other Emergencies

In the event of a full school evacuation, a Reception Centre is available.

We hold an analogue landline telephone as back-up in the event of an emergency where the digital or mobile signal is lost.

Bomb Threats or Suspicious Packages: Although very rare occurrences, the school recognises the importance of ensuring that emergency plans and procedures need to be in place for dealing with potential or actual threats. These will include measures if suspicions are raised by a verbal threat or unidentifiable package/article on the school site. We follow the information set out in the Home Office document, *Protecting Against Terrorism* <https://www.gov.uk/government/publications/protecting-against-terrorism>.

School Closures - Emergency and Planned

The Head teacher will be responsible for taking the decision to close the school in an emergency. The school will follow the procedure outlined in the Lancashire School Closures Advice displayed in school. All parents will be contacted by the quickest available means. Should there be no contact available; any affected children will remain in school.

References and Useful Links

Regulatory Reform (Fire Safety) Order 2005

HM Government Fire Risk Assessment in Educational Premises

<https://www.kymallanhsc.co.uk/Document/DownloadDocument/7755>

Protecting Against Terrorism <https://www.gov.uk/government/publications/protecting-against-terrorism>

KAHSC General Safety Series G31 <https://www.kymallanhsc.co.uk/Document/DownloadDocument/7872>

KAHSC General Safety Series G35 <https://www.kymallanhsc.co.uk/Document/DownloadDocument/7826>

KAHSC General Safety Series G36 <https://www.kymallanhsc.co.uk/Document/DownloadDocument/8745>

KAHSC General Safety Series G41 <https://www.kymallanhsc.co.uk/Document/DownloadDocument/7870>

KAHSC School Closures Advice for Schools <https://www.kymallanhsc.co.uk/Document/DownloadDocument/8698>

School's Critical Incident & Recovery Plan, Fire Safety Management Policy, Fire Risk Assessment & Emergency Evacuation Plan/procedures

3.24 Use and Control of Contractors and Consultants

Contractor Competence and Compliance

Governors and the Head teacher will ensure all contractors and sub-contractors are properly selected and vetted with regard to their health and safety competence. The selection of contractors will take into account contractor competence, i.e. membership of and accreditation by recognised bodies, liability insurance and other related factors, to ensure health and safety compliance is met. Questionnaires are available to assist in the selection process.

We will where appropriate utilise the advice of the LA's Corporate Procurement Team as there may be appropriate approved suppliers who have already gone through a vetting process.

Control of Contractors on School Sites

The Head teacher has a responsibility to ensure that effective liaison takes place between the school and contractors and that both parties are clear about their responsibilities. Contractors on school site can pose additional risks which may affect security, access and egress, fire evacuation etc. which should be addressed by the Head teacher and contractor through the risk assessment process. Suitable method statements or equivalent will be made available for contracted work and suitably scrutinised. Contractors will be responsible for assessing risks in relation to their work. The Head teacher is responsible for the health, safety and welfare of the pupils/students, staff, other users of the premises and visitors on the school site when contractors are working on the site and during construction work. The Head teacher must ensure that risks to pupils/students, staff and visitors created by contractors and/or construction work are adequately assessed and suitable control measures implemented to protect school users. The risk assessment should be proportionate to the hazards and risks involved. For example, for construction projects that are completely separate from occupied school buildings and grounds such as a new block being built remote from the existing buildings and playgrounds with its own vehicular access, the documented risk assessment will be reasonably brief possibly covering suitable site and vehicular separation. For larger, projects or construction work being done on or around occupied school buildings and grounds, the risk assessment will inevitably be more comprehensive. Any risk assessment should be a working document which may evolve as work progresses or site hazards/risks change.

All Contractors will be provided with documented safety information relating to the school and site which includes expected behaviour (contractor safety information sheet), local rules and procedures including emergency procedures, information about safeguarding (refer to 'Safeguarding' section below) etc. Contractors are referred to the school Asbestos Register, which highlights the known and suspected areas that may contain asbestos before any intrusive works commence.

Where relevant, joint health and safety inspections or other monitoring arrangements of contracted activities will take place. Work will be inspected before the contractor leaves site and there is a designated person to monitor contractors on school premises. Contractors are informed of the designated person & advised to contact them prior to commencing work.

In the event of extensive work being undertaken on the premises, contractors will meet with the Head teacher, members of the governing body and designers. Health and safety issues will be discussed at regular meetings between the contractor and the client with matters arising actioned within appropriate timescales or escalated.

If the work being carried out has a dangerous element, it must not be carried out at times when the children are in the vicinity and could be affected. Children should be warned to keep away from any vehicle that may be in the playground. There is a designated person(s) who monitors the contractors throughout their time on the premises.

Safeguarding

A Code of Conduct Leaflet for Adults Visiting or Working in School will be:

- issued to contractors and others working temporarily in the school when quotations or tenders are invited;
- stated as a condition of any order for maintenance work or building contract.

Additionally, where appropriate, the code should be:

- highlighted at any pre-start meeting;
- posted on the building site;
- included as part of the contractor's site safety briefings;
- issued to contractors' staff in the form of a leaflet.

Any contractors working on site must be:

- segregated from pupils by physical means, time or a combination of both; **or**
- be supervised at all times when children may be present (or children always supervised); **or**
- contractors must hold DBS certificates (without a children's barred list check) - a letter confirming that this is the case from the contractor's employer is sufficient providing the date of the Employers Letter is added to the Single Central Record (where applicable).

Risk Assessments will be conducted for the 'Use of Contractors - Child Protection'. Documented **Procedures** will also be in place for protecting children when contractors are working in school.

Permit to Work Systems

A permit-to-work system is a formal recorded process used to control work which is identified as potentially hazardous. It also ensures a more formal means of communication between site supervisors and operators and those who carry out the hazardous work.

Essential features of permit-to-work systems are:

- the identification of the person who can authorise certain jobs, and any limitations to their authority;
- the person responsible for specifying the necessary safety precautions;
- training and instruction in the issue, use and closure of permits;
- monitoring and auditing to ensure the system works as intended;
- identification of the hazards involved in the work;
- clear identification of tasks, risk assessments, permitted task duration, and supplemental or simultaneous activity and control measures.

Permits to Work will be considered for high risk activities on the school site including:

- hot work - for work of any type where heat is used or generated (e.g. by welding, flame cutting, grinding) or which might generate sparks or other sources of ignition;
- work in confined spaces;
- work on electrical systems;
- roof access and other work at height with significant risk;
- excavations;

- any other work specifically requiring a permit under a written safe working procedure or where potential risks warrant use of a permit.

References and Useful Links

KAHSC General Safety Series G07 <https://www.kymallanhsc.co.uk/Document/DownloadDocument/7624>
KAHSC General Safety Series G18a <https://www.kymallanhsc.co.uk/Document/DownloadDocument/8071>
KAHSC General Safety Series G18b <https://www.kymallanhsc.co.uk/Document/DownloadDocument/8769>
KAHSC General Safety Series G36 <https://www.kymallanhsc.co.uk/Document/DownloadDocument/8745>
HSE Using Contractors – A Brief Guide <http://www.hse.gov.uk/pubns/indq368.pdf>
HSE Managing Health and Safety in Construction – Guidance on the CDM Regulations
<http://www.hse.gov.uk/pubns/priced/l153.pdf>
School's Asbestos Register
School's Procedures for 'Protecting Children when Contractors are Working in School'
School's Contractor – Child Protection Risk Assessment

3.25 Construction Work (CDM)

Construction work can be defined as redecoration, roof work, rewiring, general refurbishment and the building of extensions etc. **ALL** construction work is covered by the Construction (Design and Management) Regulations 2015 regardless of the scale of the project or duration of the work. As a **Client**, we need to do the following:

Appoint the right people at the right time

- If more than one contractor will be involved in the project, we will need to appoint (in writing) a principal designer and a principal contractor.
- Designers and contractors need to have the skills, knowledge and experience to identify, reduce and manage health and safety risks. This is also the case if they are a company (known as having 'organisational capability' for the job). The designers and the contractors should be able to give references from previous clients for similar work and explain how they will achieve this.
- If we do not appoint a principal designer or principal contractor we will be responsible for the things that they should have done.

Ensure There Are Arrangements In Place for Managing and Organising the Project

The work is more likely to be done without harming anyone and on time if it is properly planned and managed. Sometimes the work is complex and uses many different trades. The principal designer should understand these types of risks and try to avoid them when designing our project. The principal contractor or builder should manage the risks on site.

Allow Adequate Time

Work that is rushed is likely to be unsafe and of poor quality. We will allow enough time for the design, planning and construction work to be undertaken properly.

Provide information to Designers and Contractors

Our designer and builder will need information about what we want built, the site and existing structures or hazards that may be present such as asbestos, overhead cables, and buried services. Providing this information at an early stage will help them to plan, budget and work around problems. Our principal designer can help us gather this information. Putting together a 'client brief' at the earliest stages which includes as much information as we have about the project, along with the timescales and budget for the build and how we expect the project to be managed can help us to set the standards for managing health and safety.

Communicate with Designers and Building Contractors

Projects will only run efficiently if everyone involved in the work communicates, cooperates and coordinates with each other. During the design and planning stage, we will discuss with our designer and contractor issues affecting what will be built, how it will be built, how it will be used and how it will be maintained when finished. This will avoid people being harmed or having unexpected costs because issues were not considered when design changes could still easily be made. Meeting with our designer and contractor as the work progresses gives an opportunity to deal with problems that may arise and discuss health and safety which will help to ensure that the work progresses as planned.

Ensure Adequate Welfare Facilities on Site

We will ensure that our contractor has made arrangements for adequate welfare facilities for their workers before the work starts.

Ensure a Construction Phase Plan is in place

The principal contractor (or contractor if there is only one contractor) has to draw up a plan explaining how health and safety risks will be managed. This should be proportionate to the scale of the work and associated risks and we will not allow work to start on site until there is a plan.

Protecting Members of the Public, including our Employees

As an employer, who has members of the public visiting our premises, we need to be sure that they are protected from the risks of construction work. We will discuss with our designer and contractor how the construction work may affect how we run the school, e.g. we may have to re-route pedestrian access; make sure signs to our entrance are clear; or change the way our deliveries operate.

Notifying Construction Projects

Where construction work will last longer than 30 days with more than 20 workers working at the same time, or involving 500 person days of work, we will notify the HSE of the project as soon as possible before construction work starts. In practice, we may request someone else to do this on our behalf.

Keep the Health and Safety File

At the end of the build the principal designer should give us a health and safety file. If the principal designer leaves before the end of the project, the principal contractor (or contractor if there is only one contractor) should do this. It is a record of useful information which will help us manage health and safety risks during any future maintenance, repair, construction work or demolition. We will keep the file, make it available to anyone who needs to alter or maintain the building, and update it if circumstances change.

References and Useful Links

KAHSC General Safety Series G18a <https://www.kymallanhsc.co.uk/Document/DownloadDocument/8071>

KAHSC General Safety Series G18b <https://www.kymallanhsc.co.uk/Document/DownloadDocument/8769>

HSE Using Contractors – A Brief Guide <http://www.hse.gov.uk/pubns/indg368.pdf>

HSE Managing Health and Safety in Construction – Guidance on the CDM Regulations

<http://www.hse.gov.uk/pubns/priced/l153.pdf>

3.26 Site / Building Security and Personal Safety / Lone Working

We have, through risk assessment, balanced the need to remain a welcoming environment to the community whilst ensuring the safety of all our pupils and staff. An assessment of the number and type of security incidents (e.g. walkers straying on to school premises and getting into the buildings; vandalism and break-ins, unhygienic detritus such as used syringes and condoms) will highlight how much of a risk a right of way / other security issues may present. We have created a record system of these incidents to show that we are taking the hazard seriously with constant monitoring of the situation. The security risk assessment will be routinely reviewed annually by the Head teacher (or sooner should circumstances change significantly); the findings will also be used in the review of these Security Procedures. The school will take all reasonable efforts to restrict access to the building and grounds to prevent unauthorised access to children and ensure the personal safety of staff. The school has close links with local police and the Community Police Officer.

Reception (Main Entrance)

- The main building only has a single access entrance via a reception desk. Signage directs all visitors to this entrance. Every visitor to the school is channelled through reception. Even when the receptionist or secretary is not on duty full time, reception remains the point to which all enquiries should be directed. Having one main entrance in use during the daytime makes monitoring of strangers much easier. Visitors – even parents bringing in forgotten lunches – should use that main door and be dealt with by a receptionist
- Reception is a secure area and visitors cannot gain access to other parts of the school without being challenged or at least seen by a member of staff.

Signs

- Reception is clearly identified by signs so that visitors who are not familiar with the site are in no doubt of the visitor entrance to the school. Parents are informed that they must use this entrance during the day rather than the morning/afternoon pupil entrances.
- Signs are easily seen from general car parking areas and all accessible boundary entrances.

Doors/Gates

- Doors are secured from the inside but the locking mechanisms to doors that may be used in the escape from fire are fitted with locks capable of being opened without a key by those escaping from the fire.

- Any door to which a lock or securing device, e.g. a push pad panic latch, night latch, etc. is fitted, is capable of being opened by any occupant of the building including children.
- Doors with latches or digital locks also have automatic door closers fitted. These are capable of engaging a latch effectively but the last few inches of travel has been damped to ensure that fingers are not caught in a rapidly closing door.
- The school gates are closed before, after and during school hours.
- Keypads are placed on all main entrances and are in force when children are in the building.
- School gates are kept closed and bolted at all times during the school day and are locked out of school hours to make it harder for intruders to get in.
- The building is checked by the last person leaving, ensuring all windows and outside doors are secure.
- We ensure that supervision rotas take account of monitoring the premises' access and egress points and pupil safety in non-lesson time and that visitor admittance procedures are maintained and staffed throughout break and lunchtimes.

Intruder alarm system

- We have an Intruder alarm installed which is set by the last person leaving at the end of every day/work period.
- This is maintained as per manufacturer's instructions and records are held.

Security Lighting

- Extensive floodlighting covers frequently used footpaths, entrances and exit doors adjacent to car parks.
- Security lighting has been installed externally – the aim of this is to act as a deterrent by assisting casual surveillance of the premises.
- External lighting and burglar alarms are regularly checked and any faults reported in line with our Defect Reporting Procedures.

Communications

Our school is made up of separate buildings or remote classrooms. Communication links are maintained by an extended telephone system / a cordless telephone to run in tandem with the existing phone / walkie talkie systems which are charged each evening. One master walkie talkie is held in the main building at all times when the separate buildings are occupied.

Visitors/Contractors Book/Badges

- All visitors and contractors must be signed in and out of the school buildings.
- Visitors on site will be accompanied by a member of staff to their destination and will be returned to Reception by a member of staff in order to "sign out" of school.
- Teachers will not allow any adult to enter their classroom if the school does not identify them.
- Pupils are encouraged to let staff know about people on the premises who are not wearing a badge. Where appropriate and safe, staff will challenge those individuals who do not appear to have followed the signing in procedures.
- A Contractors Safety Information Sheet and Code of Conduct for Adults Visiting or Working on School Site Leaflet have been prepared to share with contractors and visitors admitted to the site so that all are aware of the safety procedures in operation.
- Any contractors working on site will be:
 - segregated from pupils by physical means, time or a combination of both; **or**
 - be supervised at all times when children may be present (or children always supervised); **or**
 - contractors must hold DBS certificates (without a children's barred list check) - a letter confirming that this is the case from the contractor's employer is sufficient providing the date of the Employers Letter is added to the Single Central Record (where applicable).
- Risk Assessments will be conducted for the 'Use of Contractors - Child Protection'. For further details, refer to our Procedures for 'Protecting Children when Contractors are Working in Educational Settings' held separately.

Pupil and Staff Signing in Out Procedures

- The School operates a signing in /signing out system for all staff /pupils who are late / leaving early.
- Pupils who wish to leave the site during the school day must have written permission, sighted by appropriate staff.

Fire and Arson Prevention

Further details can be found in the school Fire Safety Management Policy held separately.

Cultivating a Positive Safety and Security Attitude

- All staff are made aware of the school's security procedures, especially staff that have been given a specific role to play. This forms part of all new staff Induction Training and is reinforced with other staff at regular intervals. Every occupant of the school is encouraged to foster and maintain an inquisitive attitude towards strangers. Details of known local people who have no reason to be present have been noted.
- If suspicions are heightened, descriptions, both personal and of vehicles will be recorded, (the singular most important item of information in relation to a vehicle being its registration mark) in case they subsequently need to be passed to the police.
- Regular briefings of pupils and staff are carried out which encourage them to report anyone suspicious wandering around the site.
- Anyone not wearing a badge or people who are found in the school or its environs with no reason to be there will be challenged by staff or reported to a member of staff by pupils. In certain circumstances, staff will be required to gauge whether or not it is appropriate to challenge individuals depending on the situation.
- Children are actively encouraged to tell staff about the presence of strangers or anyone acting suspiciously but under no circumstances should they approach them.

Cooperation with third parties, extended services and community groups

These arrangements will be communicated to all third parties that use the premises and grounds. All will be expected to comply with the schools' security arrangements as a condition of sharing use of the building. Parents will be informed about the schools' security arrangements and any part they are expected to play e.g. when visiting the school or at handover times.

Our school security arrangements have taken into account any other third parties who use the school building or grounds. In most circumstances the arrangements for the school in general will be equally applicable for the third parties involved. Although not extensive use, community groups may use facilities at the end of the school day. When inside the building access to the rest of that block is restricted. Risk assessments as part of induction arrangements are carried out. No hirer will be allowed to use the school facilities unless they fully comply with the security risk assessment. Visitors in unauthorised locations will be professionally challenged by staff.

Supervision

The following areas are accessible by the public but the risk is controlled with our school's supervision arrangements and how the school deals with visitors. The access arrangements for the grounds are:

- *School field* – access to school field for PE – always under control of staff. Staff would professionally challenge any person not wearing a photo ID or badge. As communication is not easily possible whilst on the fields, supervisors in this location will use a walkie-talkie, supplied by the school office.
- *Lunchtime* – children use school field that could be accessed by a person walking, always under control of staff. Staff would professionally challenge any person not wearing a photo ID
- *Playground* – our main access route to the reception is adjacent to / through the playground. This area is only used under staff supervision at break and lunch and staff would professionally challenge any person not wearing a photo ID.
- *Start of school day* – as the grounds have open access, staff are deployed in playground areas 10 minutes before the start of the school day.
- *End of the school day* - staff are deployed in designated areas.

Personal Safety / Lone Working

- Lone Working Risk Assessments are undertaken for staff where there is a security risk due to the need to work alone; staff at high risk will receive appropriate training/instruction.
- Procedures have been established for staff and employees who may be working on the premises alone or isolated in separate parts of the building(s). These procedures also take into account cleaning staff and staff on duty during further education sessions.
- The school is fitted with an alarm which is set by the last person leaving at the end of the day/work period.
- The building must be checked by the last person leaving, ensuring all windows and outside doors are secure.
- Staff working late, should ensure doors are locked, notify someone responsible (i.e. a family member or colleague) of their presence in school and give an indication of the time they will be leaving and the time they are expected home.
- External lighting and burglar alarms are regularly checked and any faults reported in line with our Defect Reporting Procedures.
- Lone working is not permitted when working at height, carrying out hot works, e.g. cutting and welding, working in confined spaces, or for the use of potentially dangerous substances or machinery, e.g. lathes, benchsaws, chainsaws.

Cash Handling, Storage & Carriage

- We encourage payment by cheque or debit/credit cards to avoid the handling or storage of cash.
- Holding large amounts of cash in school will, where possible, be avoided.
- When it is necessary to hold large amounts of cash, the cash will always be kept in the safe suitable for holding that particular amount of cash.
- The following guidelines have been adopted in relation to keys for safes, strong rooms, security cabinets or any other keys, which give access to property of intrinsic value:
 - the number of staff having such keys is kept to a minimum;
 - during the normal working day, if practicable, keys should be kept on the person at all times;
 - if it is not possible for keys to be kept on the person at all times, they will be kept in a locked key security cabinet and the key to the security cabinet kept on the person at all times;
 - high security keys are not left on premises when they are closed for business, even in a locked security cabinet. Designated key holders will keep them in their possession at all times;
 - It is not possible to identify what the keys are for by looking at a label or tag attached to it. The keys are numbered / otherwise marked so that only authorised users know or are able to establish what they are for.
 - The issuing of school master keys to staff is strictly limited.
- Cash held on premises which is used from time to time for payments etc. will be reconciled as frequently as circumstances dictate.
- We always vary the times when cash is carried off the premises and try to vary the route taken to destination
- The duty of banking is shared so no one person becomes associated with carrying cash.
- Cash is disguised in a carrier bag or other holdall and staff instructed to ensure it is hidden or covered in the car.
- Persons responsible for carrying cash on school business are provided with adequate induction, training and instruction and it is made clear that they are not expected to put themselves at risk by resisting any person who is attacking or threatening them. They should concentrate on observing the attacker to assist in the subsequent police investigation.

Medicines

Refer to the school Supporting Pupils at Schools with Medical Conditions Policy and procedures held separately.

Security of Laptops and other Valuables

Lockers are made available to pupils for security of personal items, although parents and pupils are regularly advised not to bring or allow children to bring valuable belongings into school. Secure areas are available for staff possessions.

The following procedures are followed to help reduce the risk of opportune thieves taking laptops and other high value equipment from school:

- We ensure that all staff and others in the school understand exactly what they need to do to keep ICT and other valuable equipment safe. Teachers and support staff then pass on the relevant information to their classes. Training reviews are given at least annually, and the ICT security guide regularly reviewed to take account of any new equipment that has been purchased.
- Laptops are kept in rooms where there are blinds which can be closed when the room is not in use; evenings, weekends and during the school holidays.
- During long periods of closure, laptops and other high value equipment are locked in secure cupboards or storerooms.
- All rooms that contain equipment such as ICT facilities, computers and scientific items are kept locked when not in use. Locks are either push button combinations or swipe cards/fobs. In either case, only staff know the combinations or possess swipe cards/fobs.
- We never advertise ICT assets on our school website, social networking sites or newsletters. We do not inform the local press when we purchase a lot of new equipment.
- When new equipment is bought, we flatten its packaging, turn it inside out and crush it before putting it outside with the rubbish, to avoid notifying potential thieves to a delivery.
- All high value equipment has been marked with the postcode and the name of the school. The markings are visible and difficult to remove or disguise.
- We ensure external ICT technicians present ID before they are taken to service computers, and ensure that these people sign in and out.
- We ensure that visitors are accompanied when they walk around the building, and insist that all guests sign in and out.
- When out and about, staff are instructed to carry their laptops in an anonymous bag or case in order not to alert thieves to its contents.
- If any of our mobile IT is stolen, we will alert the police as soon as possible.

- Where we have any concerns about the security of our school and the equipment within it we will contact our local Crime Prevention Officer by dialling 101 and asking for the Crime Prevention Service.

References and Useful Links

KAHSC General Safety Series G01 <https://www.kymallanhsc.co.uk/Document/DownloadDocument/7621>

KAHSC General Safety Series G16 <https://www.kymallanhsc.co.uk/Document/DownloadDocument/7863>

KAHSC General Safety Series G26

KAHSC General Safety Series G42 <https://www.kymallanhsc.co.uk/Document/DownloadDocument/8245>

School's CCTV Procedures, Child Protection & Data Protection Policy

3.27 Workplace Environments

A safe and healthy workplace environment will be maintained at the school in line with School Premises (England) Regulations 2012, the Education (Independent School Standards) (England) Regulations 2010 (as amended 2013) and the Workplace (Health, Safety & Workplace) Regulations 1992.

Heating

A comfortable working temperature will be maintained of at least 16°C unless much of the work involves severe physical effort in which case the temperature will be 13 °C (or where it is impractical to maintain these temperatures i.e. where food has to be kept cold). In the event of the need for portable heating or cooling, any equipment provided to achieve this will be suitable for use, free from defects, and safely sited so as not to create additional hazards.

Radiant heaters will NEVER be used.

Welfare & Changing Facilities

Suitable welfare and changing facilities will be maintained in a safe and clean condition for all staff and pupils in line with the School Premises (England) Regulations 2012, the Education (Independent School Standards) (England) Regulations 2010 (as amended 2013) and the Workplace (Health, Safety & Workplace) Regulations 1992. Toilets and washing facilities for staff may also be used by visitors are separate from those provided for pupils (except where they are designed for use by those who are disabled). Each toilet for disabled pupils contains one toilet and one washbasin and has a door opening directly onto a circulation space that is not a staircase, which can be secured from the inside. The number and location of accessible toilets are sufficient to ensure a reasonable travel distance for users that does not involve changing floor levels.

Medical Accommodation

Suitable accommodation is provided in order to cater for the medical and therapy needs of pupils, including accommodation for the medical examination and treatment of pupils and the short term care of sick and injured pupils, which includes a washing facility and is near to a toilet facility. The accommodation provided may be used for other purposes (apart from teaching) however it is always readily available to be used for the purposes above.

Additional medical accommodation will also be made available where required which caters for pupils with complex needs.

Ventilation

An adequate supply of fresh air will be maintained. Where possible this will be from natural ventilation from windows.

Access and Egress

We will implement inspection procedures, defect reporting and extra attention during inclement weather. We will bring our winter gritting plan to the attention of staff, pupils and parents/guardians to ensure safe routes are followed during periods of snow and ice.

Acoustics

The acoustic conditions and sound insulation of each room is suitable, having regard to the nature of the activities which normally take place within each area. Checks will be made of any new builds by Building Control to ensure compliance.

Children will be kept at least two metres from the front of loudspeakers used for discos.

Lighting

- The school will be lit by natural daylight wherever possible. Where artificial lighting is employed, this will be in good repair and suitable for the tasks being undertaken.
- The lighting in each room or other internal space is suitable, having regard to the nature of the activities which normally take place therein.
- External lighting has been provided in order to ensure that people can safely enter and leave the school premises.

- Blinds / curtains are in place to block sunlight, to avoid glare, excessive internal illuminance and summertime overheating;
- Emergency lighting has been installed in areas accessible after dark or where not already in place, the need to provide emergency lighting in areas accessible after dark has been added to our Annual Management Plan as a future, longer-term objective.

Lighting for pupils with special educational needs:

Pupils with special educational needs, including visual impairment and other disabilities, may have additional lighting requirements and specialist advice may be needed. Key points include:

- colour and contrast, which can help people locate doors and their handles, stairs and steps, switches and socket outlets, etc.;
- glare should be avoided (including from high gloss finishes that can appear as glare sources when they reflect bright lights);
- use of light sources such as high frequency fluorescent luminaires to avoid subliminal flicker that can induce epileptic fits in susceptible pupils;
- large areas of glazing should be clearly marked to avoid accidents;
- additional local task lighting may be needed.

Water Supplies

- Suitable drinking water facilities are provided which are readily accessible at all times when the premises are in use and are in a separate area from the toilet facilities.
- Toilets and urinals have an adequate supply of cold water and washing facilities have an adequate supply of hot and cold water.
- Cold water supplies that are suitable for drinking have been clearly marked as such.
- The temperature of hot water at the point of use by pupils does not pose a scalding risk to users i.e. hot water is heated to temperatures of 60°C, but the temperature at outlets used pupils is controlled by thermostatic mixer valves to achieve temperatures at taps not exceeding 43 °C (refer to Section on Legionella Control).

Outdoor Space

Suitable outdoor space is provided in order to enable physical education to be provided to pupils in accordance with the school curriculum and pupils to play outside.

There are two types of outdoor space used for physical education (PE); sports pitches and hard surfaced games courts. Sports pitches, grass and/or all-weather, are used for team games such as football, hockey and cricket, and for athletics. Games courts are for sports such as netball and tennis. Outdoor space is also available for informal play and socialising.

Outdoor Working

Refer to the Sun Protection arrangements within this Policy for further details.

Window Blind Cords and Chains

We have identified via Risk Assessment the presence of any looped cord or chained window or door blinds and have implemented the following measures to prevent strangulation:

- Staff ensure that cords or chains are stowed out of reach so that children are not at risk of strangulation.
- Wherever possible, we have used safety devices such as cord cleats, cord/chain tidies and chain break connectors. Where loops cannot be stowed away safely they have been cut to ensure that the loop is removed.
- Staff are instructed to always reposition nearby furniture (e.g. chairs) to ensure they cannot be used to access looped cords, or where people can become accidentally entangled.
- We have introduced a regular checking regime for all blinds which have looped cords or chains to ensure that they remain in a safe condition. Staff inspect these in their own classrooms/areas and report any faults in line with our Defect Reporting Procedures so that remedial action can be taken.
- Where new furniture is introduced, or decoration and room layouts have changed we ensure that the risk assessment is reviewed and updated as appropriate.
- When new blinds are ordered, we will select blinds which do not contain cords or have concealed cords.

Preventing Finger Trapping Incidents

- A risk assessment has been undertaken to determine the risk of finger trapping incidents;
- We try to reduce or remove the need for pupils to gather near the doors;
- We ensure that essential equipment is not positioned adjacent to or immediately behind doors e.g. A paper towel dispenser;
- We increase awareness of staff and pupils to potential risks;

- We prevent uncontrolled access to vulnerable doors.
- Where such measures are not practicable, finger guarding devices have been installed;
- Wherever possible during replacement or refurbishment of doors then the risk of finger trapping should be designed out. Where this is not possible and there is a significant risk then finger guarding devices will be fitted where required;
- For both new and existing devices in schools class teachers are responsible for regularly undertaking a brief, informal visual inspection to check the condition of any protective devices fitted. Any obvious defects should be reported in the usual manner so that repairs or replacement can be undertaken.

Glazing

- Every window or other transparent or translucent surface in a wall, partition, door or gate should, where necessary for reasons of health or safety, be of a safety material or be protected against breakage and be appropriately marked;
- Glazing in critical locations is considered reasonably safe if its nature is such that, if breakage did occur, any particles would be relatively harmless (i.e. by installing toughened glass);
- The requirement may also be met if the glazing is sufficiently robust to ensure that the risk of breakage is low (i.e. laminated glass or covered with safety film), or if steps are taken to limit the risk of contact with the glazing (i.e. by the use of barriers);
- Steps are taken to ensure that glazing will break safely must such a child come into contact with it;
- Wired glass inherent in fire doors has been replaced with Georgian wired safety glass;
- Where there are large uninterrupted areas of transparent glazing, steps have been taken to identify its presence e.g. by marking or etching the glass to make it apparent;
- Windows and doors are adequately maintained to ensure that they open easily and without effort;
- Those individuals opening windows are not put at risk of falling either through the glass or the subsequent opening;
- Window restrictors have been fitted where the risk of falling from a window opening is apparent. Windows do not open directly onto traffic routes in such a manner that individuals are liable to collide with them;
- Artwork or other material never obscures viewing panels in doors;
- Records are kept on the premises giving details of the areas of safety glazing - this ensures that when a piece of glass needs to be replaced in the future, it is replaced with that of a similar nature;
- The Risk Assessment is reviewed at least annually (or sooner if circumstances change significantly) to ensure that it remains valid. The risk assessment may be reviewed if areas of school begin to be used for other purposes where the activity is more likely to pose an impact risk; changes in pupil behaviour i.e. the area is used by pupils with unpredictable behaviour, etc.;
- Where glazing is replaced, for whatever reason, a full risk assessment will be prepared which will determine the type of glass to be used and the method by which it will be replaced. This is particularly relevant with respect to fire doors, escape routes, kitchens, etc. Similarly, when embarking on any building or alteration works (particularly change of use), risk assessments will be prepared.

Dog Fouling

- Notices have been displayed around the site in prominent positions indicating that school fields are private property;
- A police officer or any person authorised by the School Governors can remove trespassers, provided there is reasonable cause to suspect that the person in question is committing or has committed an offence under the Section. Wherever possible, the authorised person should take details of the offender's name and address;
- Parents are regularly reminded by letter not to bring their dogs onto school grounds, even when dropping off or collecting their children from school;
- To report a stray dog, contact the Dog Warden at the local District Council. Enforcement officers enforce the law relating to stray dogs and operate a service for the seizure of stray dogs;
- Where instances of dog fouling, the caretaker will be asked to remove the offending material. They are advised to avoid direct skin contact with the faeces and they must wear gloves. They will remove the faeces with a shovel and dispose of them by double-wrapping/bagging them and placing them in the general refuse.

Building Work

All building work undertaken including new builds, alterations of and improvements to existing buildings will conform to the Building Regulations 2010.

References and Useful Links

The Workplace (Health, Safety and Welfare) Regulations 1992 ACOP - <http://www.hse.gov.uk/pubns/priced/l24.pdf>

The Education Act 1996

School Premises (England) Regulations 2012

Education (Independent School Standards) (England) Regulations 2010 (as amended 2013)

DfE Statutory Framework for EYFS <https://www.kymallanhsc.co.uk/Document/DownloadDocument/8511>
National Minimum Standards for Boarding Schools [Click here to access](#)
KAHSC General Safety Series G44 <https://www.kymallanhsc.co.uk/Document/DownloadDocument/7925>
NHS Sun Safety Advice - <http://www.nhs.uk/Livewell/travelhealth/Pages/SunsafetyQA.aspx>
Cancer Research Sunsmart Website - <http://www.sunsmart.org.uk/>
Health risks from working in the sun HSE Guidance <http://www.hse.gov.uk/pubns/indg147.pdf> -
Glass & Glazing Federation <http://www.ggf.org.uk/commercial>
The Local Government (Miscellaneous Provisions) Act 1982
Compliance Monitoring in Council Buildings <https://www.kymallanhsc.co.uk/Document/DownloadDocument/7994>

3.28 Educational Visits and Activities

Refer to the school's Offsite Visits Procedures held separately.

References and Useful Links

OEAP National Guidance www.oeapng.info
www.kymallanhsc.co.uk
School Off Site Visits Procedures

3.29 Food Safety Arrangements

General Food Safety Standards (School Meal Provision, Food Technology/Baking, Cookery Clubs & Wrap Around Care)

- Our school aims to provide the highest standard of food safety and hygiene. In particular, we will ensure that the food and drink prepared and sold on our premises is both safe and wholesome. We will ensure that legal requirements relating to food safety and hygiene will be complied with fully.
- We will provide hygienic premises and ensure hygienic equipment is provided for the safe preparation of food.
- We will ourselves, or through the use of a carefully selected contractor, put in place documented food safety management procedures based on the principles of HACCP (hazard analysis and critical control point) and follow rules laid out in the Food Information Regulations 2014 with regard to allergens.
- Any employee involved with the handling and preparation of food will hold suitable food hygiene qualifications which are renewed at intervals not exceeding 3 years:
 - CIEH **Level 1** Food Safety Award (or equivalent) is designed for staff handling very low risk foods such as wrapped foods, fresh fruit etc. and for 'waiting on' staff. This MAY include nursery staff if only preparing sliced fruit for pupils or breakfast club staff only preparing toast and cereal for example.
 - CIEH **Level 2** Food Safety Award (or equivalent) is designed for everything else including commercial catering.
- ALL staff activities (commercial kitchens, food technology, cookery clubs, wrap around care) will be aware of food allergens and the consequences of them being eaten by anyone with a food allergy. Basic allergen training will be given to all staff on their first day of employment and before food handling duties commence with records of training kept. All staff will be trained in avoiding cross-contamination of foods by the major food allergens.
- All relevant staff involved in food preparation will need to be aware of the contents of Individual Healthcare Plans for pupils with allergies.
- Staff will be trained to cross reference Individual Healthcare Plans for Pupils with food allergies.
- Allergen information of school meals must be recorded and available. Staff will ensure allergen information is kept up to date e.g. if foods purchased are changed or products substituted.

Food in the Curriculum

- Appropriate risk assessments must be in place for food technology activities, the working environment and machinery/equipment.
- Gas appliances in food technology should be serviced every year by a Gas Safe Registered engineer, and current records/certificates must be held on site. Similarly, any electrical appliances used will either need to be included in the school's portable electrical appliance inspection & testing programme, or if not portable equipment, should undergo routine planned, preventative maintenance in line with manufacturer's instructions.
- All emergency gas and power cut-off switches must be easily identified and accessible and staff must be aware of the location and operation of the mains services
- Portable/transportable ovens must be sited appropriately i.e. not underneath overhanging cupboards, away from combustible materials/displays especially those that are loose, away from water supplies etc. and must never be moved when hot/warm.
- It is essential to ensure the number of pupils using particular pieces of equipment is controlled so that crowding/accidental pushing, etc. does not take place or pupil numbers reduced to prevent this.
- Clear working procedures should be written down and brought to the attention of anyone who may be required to use equipment.

- Oven gloves/cloths and where appropriate, cooker guards and hob covers must be available & used appropriately.
- Ovens are only to be used by adults or pupils using the oven are supervised appropriate to their age range and abilities.
- Equipment must be sited so that draughts from windows and doors do not interfere with the safe working of a particular piece of equipment.
- Equipment, materials and tools must be regularly inspected and appropriately maintained.
- If fridges/freezers are used to store food stuffs/ingredients for food technology activities, the temperature of equipment must be checked and recorded on a daily basis (Fridges between 2-5°C; Freezers -18 °C or below).
- Food stuffs must be stored appropriately i.e. perishable items stored off the floor and food/ equipment shelving sealed, clean and wipeable.
- Appropriate fire-fighting equipment must be located in the workroom (appropriate fire extinguisher(s) and fire blanket) and fire exits must be unobstructed.
- Heat generating equipment MUST be switched off after use and at the end of the each day.

References and Useful Links

Food Safety Act 1990

Food Safety (General Food Hygiene) Regulations 1995

The Food Hygiene (England) Regulations 2006

Food Information Regulations 2014

Food Standards Agency – Safer Food Better Business Manual <https://www.food.gov.uk/business-industry/sfbb>

KAHSC Catering Code of Practice

CLEAPSS www.cleapss.org.uk/

The Food Standards Agency <http://allergytraining.food.gov.uk/>

3.30 School Cleaning

- Appropriate risk assessments are undertaken for cleaning activities, the working environment and machinery and all cleaning staff are made aware of the hazards and risks associated with their work and what they should do to prevent accidents to themselves and other (control measures).
- Portable electrical appliances are included in the school's electrical inspection and testing programme.
- All cleaning staff receive training/instruction in Health and Safety Induction, Use of Machinery/Equipment, Control of Substances Hazardous to Health and Manual Handling.
- All accidents and incidents involving cleaning staff will be recorded in the MAIN school accident book and will be reported in line with our Accident Reporting Procedures.
- There will be an appropriate defect reporting procedure in place. Cleaning staff should report any identified defects or hazards to their equipment or the environment in line with our Defect Reporting Procedures.
- Equipment, materials and tools will be regularly inspected and appropriately maintained.
- Staff will be made aware of the location of the mains services i.e. Water, Electricity and Oil.
- All cleaning staff are instructed to ensure that they never obstruct Fire exits or escape routes.
- Cleaning staff will be made aware of what to do in the event of fire i.e. how to raise the alarm, evacuation procedures and carry school cordless telephone for use in an emergency.
- Fire drills are on occasion, undertaken while cleaning staff are present so that they become familiar with the fire evacuation routine.
- Cleaning staff are made aware that all equipment MUST be switched off after use and returned to the locked store.
- The use and storage of cleaning chemicals will be subject to a COSHH Risk Assessment which is reviewed regularly and disseminated to relevant staff.
- Cleaning products are only ever decanted into properly labelled spray bottles – never unlabelled bottles.
- Sufficient colour coded equipment is supplied to Cleaning staff so that they clean specific areas safely, keeping equipment separate from one another.
- Cleaning materials and equipment are kept securely stored when not in use and cleaning staff instructed not to leave cleaning products unattended at any time.
- Warning signs will be displayed when wet mopping for example to warn others that floor may be slippery.
- Cleaning staff are made aware of the location of any asbestos containing materials in the building so that they do not accidentally damage them during their work.
- Cleaning staff are instructed NOT to work at height when there is no-one else in the vicinity – refer to our Work at Height Procedures for further details.
- Cleaning staff are provided with a Cleaning Code of Practice as part of their Induction which includes a Staff Handbook and a Health and Safety Manual.
- Providing there are proper cleaning schedules in place, additional routine cleaning is not generally required during outbreaks of communicable diseases/illnesses. If the Environmental Health Department or the HPU consider there is a need for extra cleaning this will be arranged with our cleaners. This might particularly be the case if children or

staff have had vomiting or diarrhoea on the premises; when toilet areas and door handles etc. may receive extra attention.

References and Useful Links

Control of Substances Hazardous to Health Regulations 2002 (as amended) <http://www.hse.gov.uk/coshh/>
Dangerous Substances & Dangerous Atmospheres Regulations 2002 <http://www.hse.gov.uk/fireandexplosion/dsear.htm>
Workplace (Health, Safety and Welfare) Regulations 1992
KAHSC General Safety Series G38a <https://www.kymallanhsc.co.uk/Document/DownloadDocument/8161>
KAHSC General Safety Series G38b <https://www.kymallanhsc.co.uk/document/downloadaddocument/8962>
KAHSC Codes of Practice for Caretakers and Cleaning

3.31 Electrical Safety

All staff, and where appropriate, pupils, will be shown how to use equipment, and to switch it off when not in use and at the end of each school day.

Acquiring Electrical Equipment

- All new items purchased will comply with the appropriate British Standard or European equivalent.
- Second-hand acquisitions or electrical equipment lent to, or borrowed by, the school will be checked for electrical safety before use. Any mains operated equipment belonging to staff will also be checked in this way. However, if there is any doubt whether the equipment is safe then it should be labelled 'out of use' and withdrawn until it has been tested and declared fit for use by a competent person.
- Second-hand, borrowed and staff equipment will be recorded as being used and will be included for testing during the regular testing programme (see below).

User Visual Checks

Any item with a plug will be given an informal visual check every time it is used – all staff have been instructed to do this. If a fault is detected, staff will remove the plug to decommission the appliance, if possible. If not, defective appliances will be labelled with a warning instructing others not to use. Staff must then report the fault in line with our Defect Reporting procedures.

Formal Visual Inspections

Formal Visual Inspections of electrical appliances will be undertaken at suitable intervals appropriate to the appliance and the environmental conditions in line with HSE guidance and General Safety Series G17.

Combined Inspection and Testing

Combined Inspection and Testing (PAT) will be undertaken at suitable intervals appropriate to the appliance and the environmental conditions in line with HSE guidance. A competent person undertakes Combined Inspection and Testing and formal records are held.

Record of Equipment

A record will be kept of all portable items of electrical equipment. When any piece of portable electrical equipment is acquired or removed from the site the record will be updated accordingly.

Residual Current Devices (Circuit Breakers)

These provide an additional level of protection and will always be used:

- when a Premises Licence has been obtained for a public performance;
- when non-school equipment is used;
- whenever any piece of electrical equipment is used outdoors;
- where fish tanks use mains voltage equipment (e.g. pumps heaters and lighting).

Extension Leads

- When being used, we ensure they do not present a tripping hazard, they are not overloaded, the lead is not twisted and there is no strain on the cable. Leads will always be fully unwound from any cable drum;
- Extension cables will never run under carpets or through doorways;
- Extension cables will be checked as part of the regular testing programme;
- Extension cables will be regarded as temporary. Regular use may indicate the need for additional sockets;
- Block style adaptors will NOT be used in school under any circumstances.

Fixed Convector/Fan Heaters

These are serviced and vacuumed out on at least an annual basis by a competent person with records kept.

Kitchen

Fixed electrical equipment in the kitchen is serviced annually by a competent person and records are held in the Buildings Register.

Fixed Electrical Installation

The main electrical installation will receive a Periodic Electrical Installation Inspection by an NICEIC or NAPIT Registered contractor at periods not exceeding five years. Records will be held. Any remedial work required as a result of the Inspection Report will be undertaken on a risk priority basis.

The electrical installation in licensed areas, swimming pools and lightning protection will receive a Periodic Electrical Installation Inspection every year.

EYFS

Socket covers will be used in unused socket outlets in the early years and foundation stage only where identified as required by school risk assessments.

References and Useful Links

<http://www.hse.gov.uk/electricity/index.htm>

KAHSC General Safety Series G17 <https://www.kymallanhsc.co.uk/Document/DownloadDocument/7991>

KAHSC General Safety Series G25 <https://www.kymallanhsc.co.uk/Document/DownloadDocument/8781>

HSG 107 - Maintaining Portable and Transportable Electrical Equipment [Click here to access](#)

INDG 236 - Maintaining Portable Electric Equipment in Offices & other Low-Risk Environments [Click here to access](#)

HSR 25 Memorandum of guidance on the Electricity at Work Regulations 1989 [Click here to access](#)

HSE L22 - Provision and Use of Work Equipment Regulations 1998. ACOP and guidance [Click here to access](#)

Compliance Monitoring in Council Buildings <https://www.kymallanhsc.co.uk/Document/DownloadDocument/7994>

School's 5 year Fixed Electrical Certificate

School's Portable Appliance Testing Register

3.32 Gas Installation and Appliances

- School Boilers and appliances are serviced annually by a Gas Safe Registered Engineer and records are kept.
- The gas installation will be inspected every 5 years by a Gas Safe Registered Engineer including pressure testing from the meter to the final appliance.
- Fixed gas equipment in the kitchen is serviced/gas checked annually by a Gas Safe Registered contractor.
- For emergency procedures relating to Gas Leaks, refer to the School Critical Incident & Recovery Plan.

References and Useful Links

Gas Safety (Installation and Use) Regulations 1998

KAHSC General Safety Series G25 <https://www.kymallanhsc.co.uk/Document/DownloadDocument/8781>

KAHSC General Safety Series G30 <https://www.kymallanhsc.co.uk/Document/DownloadDocument/7988>

Compliance Monitoring in Council Buildings <https://www.kymallanhsc.co.uk/Document/DownloadDocument/7994>

3.33 Smokefree Workplace

Our school operates a complete smoke-free policy which applies at all times. Smoking (including E-Cigarettes) is not permitted in any part of the schools premises, including within buildings, within the entrance area to the school, or on land adjacent to the school building (car park, garden areas, walkway etc.) where this forms part of the school premises. This also applies to any vehicle being used for school business.

The school's disciplinary procedure will apply for dealing with employees who breach the smoking ban at work. Pupils breaching smoke-free rules will be dealt with according to the Whole School Behaviour Policy.

These rules apply to employees, parents, visitors, members of the public, contractors and others working in or using the school's premises or vehicles. This will be clearly advertised and visitors to the school will be informed of it.

The school will support employees or pupils wishing to give up smoking by advertising and promoting external smoking cessation services and through regular health promotion activities. Resources will also be available to educate pupils and free specialist advice regarding health promotion activity will be provided.

References and Useful Links

<http://www.nhs.uk/smokefree-services/smokefree-schools.html>

<http://www.ash.org.uk/>

3.34 Transport

Private cars

- Private cars are to be used to transport pupils ONLY when the owner of the car has a valid driving licence and an insurance policy, which covers the carriage of children for school activities i.e. business use.
- Where possible, children should sit in the rear of the car and seat belts are to be worn at all times.
- Any child under 12 years and 4ft 5 in will need to use a booster cushion, and those under 25kg in weight must use a booster seat. Procedures are in place to ensure that this occurs i.e. school keeps a supply of booster cushions or ensures parents supply these when required.
- Booster seats/cushions are not required on the school minibus/hired in minibuses unless children under 12 years of age and under 4ft 5in in height are required to sit in seats parallel to the driver.
- Children will alight from the car on the kerbside, not the roadside.
- Within a normal 4/5-seater vehicle, no more than 3 children will be carried.

Occasional Business Use Insurance

Any staff member who uses their own vehicle/car on school business (for example Administrative Staff who drive to the bank to deposit school money or staff attending work related training courses) should have occasional business use cover on their car insurance schedule. A system has been developed whereby this can be monitored.

Minibus

The school does not own a minibus and only buses/coaches are hired where drivers are provided.

If pupils are ever charged for anything involving the minibus (school owned or hired), the School will hold a Section 19 Permit which is renewed every 5 years. Permits will be held in the minibus at all times it is in use.

We will 'Approve' all drivers to drive school owned or hired minibuses using the model 'Approval Form' within KAHSC General Safety Series G11.

No standing passengers may be carried and all children will wear a seat-belt.

Coach Hire

All coaches hired for school use must be fitted with seat belts. Local firms are contracted.

For the purpose of school excursions, the buses arrive and depart before and after school hours to prevent traffic hold ups outside the main gates.

References and Useful Links

The Safe Operation of Minibuses Manual

KAHSC General Safety Series G04

KAHSC General Safety Series G11 <https://www.kymallanhsc.co.uk/Document/DownloadDocument/8859>

Outdoor Education Adviser Panel National Guidance [http://oeapng.info/\(4.5 a-d\)](http://oeapng.info/(4.5 a-d))

3.35 On-Site Vehicle/Pedestrian Separation

The School has undertaken a risk assessment of traffic hazards on our site and the following control measures have been implemented to minimise the risk of injury from on-site traffic:

Buses

Where buses come onto the school site this can be an area of high risk which therefore needs to be carefully managed. The following precautions have been taken:

- Coaches park in the layby next to the main school entrance whilst pupils are kept in the entrance foyer

Supervision

Staff are proactive in the supervision before and after school and are aware of the need for the following:

- Challenging unauthorised or inappropriate parking which creates a hazard;
- Steering pupils away from traffic hazard areas;
- Releasing children into the care of their parent / carer

Signs

There is clear information for visitors communicated on signs. These include:

- Entrance sign;
- Disabled parking – pick up / drop off point;

- Main entrance to building;

Speed control

- As our site is very small, the constricted nature of the space itself is enough to limit speed.

Vehicle access and parking

- There is a staff (and visitor) car park which is separate from the pedestrian access to the school site by fencing;
- Hedges and shrubs are maintained around vehicular areas and car parks to ensure maximum visibility.

Parents cars and pedestrians

Provision for parents' cars at the beginning and end of the school day can be a major issue and we try to manage this in the following ways:

- Parents are encouraged to walk their children to school when possible;
- Parents park in the pub car park which is wider and more open to allow better vision of pedestrians
- The school has a clear policy regarding allowing parents' cars on site to pick up and drop off pupils.
- This policy is communicated to parents through regular reminder letters in the event of a problem.
- We discourage parents waiting in cars for their children.
- Co-operation of parents is sought e.g. persuading them to wait on the playground for their child.
- We do not release children from the Infant class without their parent/other adult to pick them up.
- Junior children are reminded that they must return to class if their parent isn't on the playground.
- Junior children are not allowed to go on the car park without an adult.
- Children's play areas are sited away from parked cars;
- Gates are fitted with high level handles;

References and Useful Links

Workplace (Health, Safety and Welfare Regulations) 1992

Compliance Monitoring in Council Buildings <https://www.kymallanhsc.co.uk/Document/DownloadDocument/7994>

3.36 Personal Protective Equipment

- PPE will be provided for staff and pupils where risks cannot be fully controlled in other ways. Staff can request PPE through the Health and Safety Coordinator.
- PPE will always be suitable for the task and the user.
- Re-usable PPE will be subject to periodic inspection to confirm its continued suitability, and where appropriate, subject to routine maintenance.
- Staff and pupils must use PPE as instructed, and report any defects or other problem promptly to the Health and Safety Coordinator.

References and Useful Links

HSE - <http://www.hse.gov.uk/toolbox/ppe.htm>

Personal Protective Equipment Regulations 1992

KAHSC General Safety Series G37 <https://www.kymallanhsc.co.uk/Document/DownloadDocument/7637>

3.37 Physical Education

The law expects that all physical education teachers will work within a 'modus operandi', which identifies all the foreseeable safety problems associated with the activities undertaken. The school must declare its own policies and practices, which will eliminate foreseeable risks. The Head teacher must ensure that such a system is operable, even by recently appointed staff. At least one teacher has been identified whose responsibility it is to see that safe practice is realistic and working day to day. The law will expect that an individual school's code of safe practice in physical education will reflect its own particular needs according to its programmes and premises in addition to factors which it may have in common with other similar establishments.

The Headteacher is responsible for ensuring that safe practise is carried out. Guidance offered in the '*AfPE Safe Practice in Physical Education*' is followed. The responsible person must ensure that staff have had specific training in any specialised activities (i.e. Trampolining). Records are kept of who has what qualification and when it is due to be renewed.

All pupils are instructed to safely move and handle equipment they use for PE activities. Staff supervise the erection and dismantling of PE equipment at all times and do not allow children to do this on their own (unless their age and

capabilities allow). The teacher in charge will ensure that there are sufficient children involved in moving the equipment to avoid any strain or discomfort, and will themselves assist in the actual process of erecting and dismantling.

Risk Assessments are undertaken of all PE activities so that control measures to eliminate or reduce the likelihood of an accident occurring can be implemented. Risk assessments will be monitored and reviewed regularly and be disseminated to relevant personnel. Clear written guidance, rules and procedures for use of equipment will be provided.

There will be adequate supervision of activities, and staff will be competent to lead activities in their given areas of expertise.

We ensure there is adequate storage for equipment. PE mats are held in a fire resistant store with doors kept locked when not in use.

Jewellery is not permitted to be worn during any form of Physical Education, or movement exercises. There is clear guidance within the School Prospectus concerning appropriate clothing and footwear for physical activities.

Inspection of Gymnasium Equipment

- Regular inspections will be made of halls, floors, gyms and equipment.
- PE Equipment will be inspected before use.
- Equipment will also be formally inspected at least annually by a competent contractor in accordance with the manufacturer's instructions to establish the overall condition of the equipment, foundations and surfaces. The level of competence of the person carrying out the inspection will vary with level of risk associated with the complexity of the equipment.
- If at any inspection equipment is found to be in need of repair, it will be removed, replaced or repaired immediately. If this is impractical, steps will be taken to ensure that it presents no danger to children by immobilisation, or erecting protective fencing. The repair will then be completed as soon as possible.

References and Useful Links

Safe Practice in Physical Education and School Sports – (AfPE Book) <http://www.afpe.org.uk/>

KAHSC General Safety Series G05 <https://www.kymallanhsc.co.uk/Document/DownloadDocument/7623>

KAHSC PE Safety Series PE2

KAHSC PE Code of Practice <https://www.kymallanhsc.co.uk/Document/DownloadDocument/8064>

KAHSC Code of Practice for the Primary Curriculum <https://www.kymallanhsc.co.uk/Document/DownloadDocument/8031>

3.38 Safe Use of Playground Equipment

Supervision

Children will be supervised at all times whilst using outdoor play equipment; risk assessments will be conducted to determine the appropriate number of people required to supervise play areas (this takes into account observation points, line of sight etc.). Supervising staff are made familiar with the equipment, the rules for use and of the ability of the children.

General guidelines

- The pupils will be educated about the use of climbing equipment.
- Staff/supervisors on duty will ensure that outdoor play equipment is visible and can be appropriately supervised when in use and will make regular checks for defects and report them as appropriate.
- Where necessary, a rota for use, taking into consideration the age and number of children using it at any one time will be enforced and staff/supervisors will ensure pupils behaviour appropriately.
- Consideration will always be given to weather conditions and outdoor play equipment will NOT be used during wet or icy conditions.
- Where equipment is sited on grassed areas it will be kept out of use in wet weather and for an appropriate length of time afterward to allow the ground to be sufficiently dry.
- Apparatus will only be used at appropriate times when supervised. Parents will be informed that the apparatus is for school aged children only and not to be used before and after school.

Clothing/Footwear

- Suitable clothing should be worn. Hazards can arise from unfastened coats, woollen gloves, scarves, ties, etc.
- Appropriate footwear must be worn. Hazards arise from slippery soles, open toed and sling back sandals, heels and untied laces, etc.
- Staff on duty will ensure that children not dressed appropriately are not permitted to use the equipment.

Zoning of Activities

Consideration has been given to the range of activities occurring within the playground area:

- Ball games/chasing games are sited away from the climbing area.
- In the nursery play area, wheeled toys in particular, are be used away from the climbing area.

Play Equipment Standards

- All **new** outdoor play equipment is designed, constructed, installed and maintained in accordance with European standards BS EN 1176 and BS EN 1177.
- The independent competent person carrying out annual inspection and maintenance will advise whether any alterations need to be made.
- In order to ensure compliance, we only use manufacturers/contractors with appropriate play industries registration when planning to install new outdoor play equipment. We will also check that companies have API (Association of Play Industries) or BSI registration for equipment manufacture and installation.
- Scrambling and climbing elements do not exceed 3 metres; for children below 5 the height does not exceed 1.6m.
- Structures have been spaced clear of each other to prevent one activity interfering with another, and are clear of walls, fences etc.

Safety Surfaces

- **All** products meet the appropriate BS EN Standards. Both **portable** and **fixed** climbing equipment with a fall height of 600mm has an impact-absorbing surface when used outside.
- The extent of surfacing around static equipment extends at least 1.75m beyond the outermost points of the base of the frame.
- Where bark is used this area is a minimum of 300mm deep with a recommended particle size of 38mm max and 12mm min. Additional bark is available to top up to the original level.

Inspection and Maintenance

When new equipment is installed, a post installation inspection will be arranged through the installer. BS EN 1176 recommends that all outdoor play equipment be inspected and maintained on a regular basis e.g.:

Informal Daily/pre use checks by staff - All staff with playground duties are responsible for checking equipment and surfacing before use, concentrating on the following points:

- No evidence of obvious wear / damage
- Area safe from health hazards e.g. needles, glass, faeces etc.
- Impact absorbing surfaces no cuts, tears, wear or unstuck areas
- All fastening tightly secured
- No broken chains, stretched links or loose or twisted shackles
- Uprights unbroken and firm in the ground

Where any defects / hazards are identified appropriate steps will be taken to prevent use until problems have been satisfactorily resolved.

Weekly Formal Inspection (in-house) - A more thorough check of the equipment will be conducted on a weekly basis and records will be held. Completed records will be held in the Site Supervisor records.

Annual inspection - A detailed certified inspection by an independent competent person capable of inspecting to BS EN 1176 and 1177 will be conducted at least annually by a competent contractor. Such checks ensure safety and identifies any improvements required in terms of the European standards. Any recommended repairs are undertaken, or the equipment taken out of use until funds are available to carry out the repairs or improvements.

References and Useful Links

BS EN 1176:2008 1-7 - Playground Equipment

BS EN 1177:2008 - Impact Absorbing Playground Surfacing Safety Requirements and Test Methods

DfEE – “Playground and Safety Guidelines”

API – “Guide to Outdoor Play Area Installation”

Institute of Leisure and Amenity Management – “Outdoor Play Areas for Children”

National Playing Fields Association – “Towards a Safer Adventure Playground”

ROSPA – “Children’s Playgrounds”

ROSPA – “A Guide to the New European Playground Equipment and Surfacing Standards”

KAHSC General Safety Series G33 <https://www.kymallanhsc.co.uk/Document/DownloadDocument/7635>

Compliance Monitoring in Council Buildings <https://www.kymallanhsc.co.uk/Document/DownloadDocument/7994>

3.39 Supervision of Pupils

Children will not be left unsupervised at break times. All staff, volunteers and pupils will be aware of any special site hazards and out of bounds areas.

Supervision of Pupils Before and After School

Teachers can reasonably be asked to be available to supervise children at school up to 10 minutes before school starts and for the same period after school ends, and any such supervision time is included in teachers' directed time. The relevant section of the teachers' conditions of Employment requires teachers to supervise pupils "whether... before, during or after school sessions".

As far as the supervision issue is concerned, there is no statutory legislation which covers the supervision of pupils before and after school. Parents must ensure that their children arrive at, and are collected from, school at the appropriate time either by delivering to/collecting from the school themselves; permitting them to walk to and from school alone or ensuring that, for those entitled to home-to-school transport, the child arrives at a pre-determined pick-up point and making arrangements for them to return home from the pre-determined drop off point. Having said that, pupils cannot be expected to arrive at school all at the same time when parents will themselves be leaving for work at different times. In addition, school transport arrangements mean that there are early arrivals in the morning and perhaps pupils waiting for buses after school. While the school's duty of care exists so long as the pupils are on the school premises with the school's consent, it is unreasonable for the school to have to take responsibility for children arriving at school before supervision could reasonably be expected. Similarly arrangements for collection of pupils at the end of the school day must also be reasonable.

In the case of pupils arriving/leaving on school transport, it is important that staff are available to supervise pupils as they arrive at school. Depending on the age and/or ability of the pupils, supervision may begin when they enter the school grounds. In some cases, however, circumstances may dictate that pupils are collected from the vehicle by a member of staff in person. Should it be felt that the transport is arriving at the school at an unreasonable time, we will contact the LA Integrated Transport Team where they will try to assist.

Communication with parents in these situations is particularly important. The school reminds parents when the school will take responsibility for children before school opens and at the end of the day and reminds parents that before/after then, there will be nobody to supervise pupils. If, for any reason, arrangements have to be changed, then the parents will be told well in advance.

Infant age pupils will be kept in school and handed to parents/carers once they arrive. Any pupils with special educational needs will be considered separately when a risk assessment will be used to determine the supervision and handover procedure of the pupil concerned.

Children who arrive at school knowing that supervision arrangements are not in operation are there at their own risk, and parents will be informed that during this time, the responsibility for the safety of those pupils rests with the parent/carer. However, should a member of staff be present and a dangerous situation develop, then legally as well as professionally and morally, the member of staff should attempt to intervene or to seek assistance, as the situation requires.

Non-Collection of Pupils

Children will be kept in school if they are not picked up at the end of school. If this is unnotified or unexpected then the following procedures will be followed;

15 minutes after non-collection at the normal time	Call pupil's emergency contact numbers in hierarchical order.
30 minutes after non-collection at the normal time	Continue to make repeated attempts to contact the normal emergency contact numbers provided by the parent/carer. If still no response, call the Police and explain a child has not been collected.
1 hour after non-collection at normal time	Telephone Lancashire Safeguarding Children Board (Tel: 0300 123 6720 or out of hours 0300 123 6722 (8pm - 8am) and seek further advice, providing the pupil's name, age and the details of all provided contact numbers.
A full written report of the incident will be recorded and held. Ofsted will be made aware of any serious childcare incidents but usually only if the Police or Children's Services are involved and concerns remain for a child's welfare.	

References and Useful Links

Working Together to Safeguard Children 2015 <https://www.kymallanhsc.co.uk/Document/DownloadDocument/8229>
 School's Child Protection Policy & procedures

3.40 Stage and School Performances/Events

In the case of stage blocks/modular staging, the stage is put together following the manufacturer's instructions. Pupils are permitted to assist, but are supervised at all times and given suitable safety instructions.

Fixed stages are maintained to a safe standard and regularly inspected to identify hazards and prevent accident and injury.

- All of our school performances are for the benefit of parents, grandparents and friends of the school only which would be deemed 'Private Entertainment'. No admission charge is ever made. Therefore, performances at our school are NOT Regulated Entertainment so are not Licensable as defined by the Licensing Act 2003. A Premises Licence is therefore NOT required.
- We develop a written evacuation procedure for performances/events (when larger than normal numbers of people would be present); ensure that all staff are aware of their responsibilities should an evacuation be required during a performance/event and ensure this is clearly displayed. The performance/event leader also ensures this is explained to audiences/participants at the beginning of any such performance/event.
- Calculated Hall Capacity for the hall is not exceeded unless suitable mitigating controls are introduced and included in the fire risk assessment.
- Seating, modular staging/stage blocks and trade stalls for example never obstruct fire escape routes/doors.
- Good housekeeping will be maintained to remove combustible items to minimise the risk of fire.
- Reference should also be made to the school Fire Risk Assessment held separately.

General Precautions

- Supervisors of performances and rehearsals are made aware of general emergency evacuation procedures and will ensure that suitable safety instructions are provided to audiences prior to the rehearsal or performance.
- Supervisors will ensure that the set-up for performances and rehearsals employs suitable safety measures, especially in relation to the physical safety and ability of persons involved, and to include manual handling tasks, work at height, lighting and special effects, e.g. use of dry ice and smoke machines.
- Where strobe lighting is employed this will be kept to a minimum, and clear signs will be displayed at all points of entry indicating that strobes will be used.
- Any specialist equipment will only be used by competent personnel.
- All electrical equipment will be used in accordance with the manufacturer's instructions and visual user checks will be made. RCD (Residual Circuit Devices) will be used where required.

References and Useful Links

School's Evacuation Plans and Fire Risk Assessment

<http://www.hse.gov.uk/electricity/index.htm>

Provision and Use of Work Equipment Regulations 1998 (PUWER)

Lifting Equipment and Lifting Operations Regulations 1998 (LOLER)

Manual Handling Regulations 1992

KAHSC Code of Practice for Drama <https://www.kymallanhsc.co.uk/Document/DownloadDocument/8059>

KAHSC General Safety Series 17, 19, 23, 28, 32, 35 and 37

School's 5 year Fixed Electrical Certificate

School's Portable Appliance Testing Register

COSHH 2002 (as amended) - (smoke machines, paints and solvents etc.)

3.41 Animals in School

Animals can play an important role in the education of children who can learn about their needs and characteristics. Before animals are allowed in the school, suitable and sufficient risk assessment will be carried out, including any planning which needs to be considered for pupil or animal welfare. We will ensure that any animals kept by the school will be cared for in line with the appropriate welfare requirements.

Recognised publications and guidance e.g. CLEAPSS guides will be used to determine suitable animals, inform risk assessments, and will be available when keeping animals in school.

References and Useful Links

<http://www.cleapss.org.uk/>

3.42 Sun Protection

As a school we will:

- Develop staff awareness, i.e. through provision of information regarding sun safety and available resources to teachers. The SunSmart skin cancer prevention messages will be promoted by using the SMART code:

- **S** tay in the shade 11am-3pm
- **M** ake sure you never burn
- **A** lways cover up with a t-shirt, hat and sunglasses
- **R** emember to take extra care with children
- **T** hen use at least factor 15+ sunscreen (30+ is considered best practice)
- and implementing the concepts of “Slip, Slop, Slap, Seek and Slide”:
 - **SLIP** on clothing to cover your arms and legs
 - **SLOP** on sunscreen with factor 15+ (30+ is considered best practice)
 - **SLAP** on a wide-brimmed hat
 - **SEEK** shade or create your own shade
 - **SLIDE** on some UV protective sunglasses
- Other sun safety precautions include using lip balm with a SPF of 15+ and performing regular skin examinations.
- All pupils’ sun cream/sticks/roll on must be clearly labelled. No child should share products belonging to other children.

SUPPORTING STRATEGIES

Education

These measures are in place:

- All pupils will have at least one SunSmart lesson per year or for Nurseries, have a SunSmart story time at the start of the summer term.
- We will talk about how to be SunSmart in assemblies at the start of the summer term.
- The dangers of the sun will form part of the PSHE/science curriculum
- We will provide parents with information on the type and recommended preventive strategies for sun safety through school newsletters.
- We encourage and ensure through advance notice that parents, staff and students use a preventive approach on special, all-day activities such as PE days, educational visits and sports days.

Protection

This is an ongoing process. We have developed a proactive supervision procedure during the lunch break (i.e. checking pupils for appropriate attire such as sunhats etc., encouraging the use of shade etc.). This particularly focuses on pupils whose parents have not provided them with either sunscreen or protective clothing.

Shade

- We provide a balance of activities during peak times and provide a shaded area to allow children to shelter from the sun. Supervisors will monitor pupil movement. When the sun is strong we will encourage pupils to sit/play in the shade where it is available.
- We utilise shaded areas for outdoor play. These include
 - Planting mature trees in play areas – involving pupils in the planning and care of these.
 - Providing protective shade – buildings, awnings etc.
 - Providing shaded seating – under trees, shelter etc.

Timetabling

- In the summer months we will aim to ensure hats, clothing and sunscreen are all worn to prevent sunburn.
- Wherever possible, sports day will be held after lunch to avoid the hottest part of the day.

Clothing

- Sunhats will be considered to be part of school uniform and children will be actively encouraged to wear them.
- When outside in sunny weather, children are encouraged to wear hats that cover the ears, face and neck.
- Children are allowed to wear UV protective sunglasses when outside during sunny weather.

Sunscreen

- Sunscreen use will be encouraged on days when the sun is strong during summer at lunch breaks, during PE lessons and on school trips. Parents are encouraged to apply cream before the start of school. There are proprietary products on the market which only need to be applied once per day.

- Normally, pupils will be encouraged to apply their own cream (preferably a 'roll on' style) under the supervision of an adult.
- Adults may help children apply cream to face, neck and arms. Children should apply cream to their own legs. Adults may only apply cream where another adult is present.
- Staff will apply sun cream to pupils who cannot manage to apply it themselves appropriately. Generally these will be pupils with special educational/physical needs or very young pupils.

References and Useful Links

[Cancer Research SunSmart website \(School Resources\)](#)
[Sunsmart Assembly Plan](#)
[Sunsmart Lesson Plans](#)
[National Cancer Intelligence Network \(NCIN\): Skin Cancer Hub](#)
[KAHSC General Safety Series G31 – Severe Weather Procedures](#)

3.43 Pond

- The Pond has been designed so that the edges of the pond are shallow, with the deeper zone positioned away from the edges. The depth has been kept as shallow as possible but does not exceed one metre at its deepest point.
- Suitable provision has been made at the water's edge so that groups can work safely.
- The pond is fenced to prevent inadvertent approach. The fencing slats are vertical, not horizontal, with no gaps large enough for a child to pass through. The fence is at least 1.2m (4ft) in height.
- A lockable gate has been provided for access to the pond area and to deter unsupervised entry. The gate remains locked whenever the area is not in use with a padlock (not just a bolt).
- It is impracticable for us to provide a permanently fixed, large-mesh cover at water level as ours is an existing pond/a large expanse of water and it may inhibit certain science-related activities.
- Consideration has been given to the likelihood of authorised users (extended schools attendees) and trespassers during the evening and school holidays or if the school grounds will be used as a shortcut to another place.
- Appropriate warning signs have been posted, warning of the presence of a pond detailing safety rules for use.
- Risk assessments in relation to the pond and activities involving the pond have been undertaken. All relevant information (i.e. the findings of the assessment and the control measures) has been relayed to staff and to others who may carry out activities involving the pond.
- Adequate instruction is given to pupils as to the risks, and how they should behave. This includes instruction not to drink the water. Following any sessions/activities in the pond area, staff and pupils follow normal hygiene procedures and hands are washed.
- All incidents involving falls into the pond will be reported under the normal accident/incident reporting procedures – refer to our Accident reporting procedures for further details.

Pond Emergency Procedures:

As part of our risk assessment process, we have developed formal Pond Emergency Procedures which include:

- How to rescue a person who has fallen in;
- Resuscitation and first aid;
- How to call for assistance;
- What to do with other pupils during an emergency situation.

References and Useful Links

KAHSC General Safety Series G28 <https://www.kymallanhsc.co.uk/Document/DownloadDocument/7856>
RoSPA Pond Safety Advice - <http://www.rospa.com/leisureOnline/Safety/water/advice/pond-garden-water/>

3.44 Trees

Where we have trees in our grounds, tree surveys are undertaken at appropriate intervals by a competent person and a copy of the Tree Survey Report is held in school. All recommendations are appropriately actioned using a contractor who is a member of the ARB Approved Contractor Scheme (run by the member of the Arboricultural Association).

The condition of trees on site will be closely monitored (including after storms or strong winds); the trees managed and the site **re-surveyed periodically**, with recommendations acted upon on a risk priority basis.

We contact our local district council before any SIGNIFICANT work is undertaken on our trees.

References and Useful Links

<http://www.trees.org.uk/>
HSE: [Managing the Risk from Falling Trees](#)
[Forestry Commission](#)

3.45 Behaviour

The school considers the safety aspects which could arise in relation to behaviour. Reference should be made to the Whole School Behaviour Policy, Staff Code of Conduct and Positive Handling, Support and Intervention Procedures held separately.

References and Useful Links

KAHSC General Safety Series G01 <https://www.kymallanhsc.co.uk/Document/DownloadDocument/7621>

KAHSC General Safety Series G14

KAHSC General Safety Series G22 <https://www.kymallanhsc.co.uk/Document/DownloadDocument/7632>

KAHSC General Safety Series G39 <https://www.kymallanhsc.co.uk/Document/DownloadDocument/7639>

School's Whole School Behaviour Policy, Staff Code of Conduct and Positive Handling Procedures

Hornby St Margaret's CE Primary School

HEALTH AND SAFETY POLICY

I acknowledge acceptance of and the fact that I have been made aware of the contents and location of the School's Health and Safety Policy dated **6.11.17** and its associated guidance and have been made aware of my general health and safety responsibilities along with any specific roles and responsibilities for health and safety and safeguarding that have been assigned to me.

[illegible]